

ZONING DATA:

LOT AREA: 110.50' x 43.32' = 4,786 SQ.FT.

F.A.R. RT-4 1.15

MAX. BUILDABLE 5,503 SQ.FT.

BUILDING SQUARE FOOTAGE:

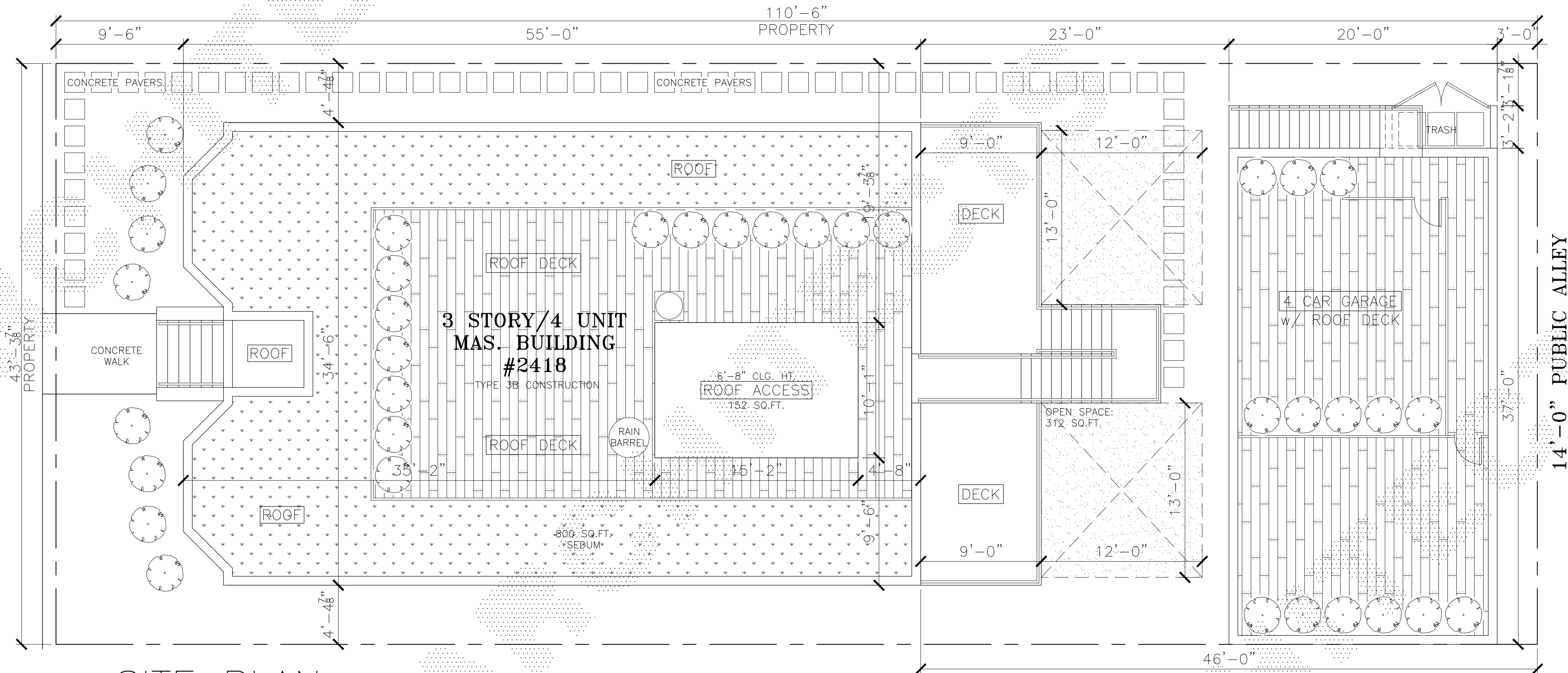
1ST FLOOR 1,834 SQ.FT.

2ND FLOOR 1,834 SQ.FT.

3RD FLOOR 1,834 SQ.FT.

TOTAL: 5,502 SQ.FT.

W. LYNDALE ST



SITE PLAN
SCALE: 1/8" = 1'-0"



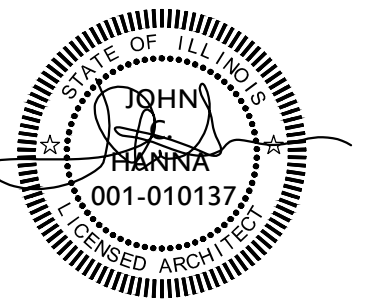
(312) 750-1800

180 W. WASHINGTON
CHICAGO, ILLINOIS 60602
FAX (312) 750-1801

PROFESSIONAL DESIGN FIRM
ARCHITECT CORPORATION
LICENSE NUMBER: 184 - 001485

WARNING:
This plan Protected under Copyright Laws. Original mylar drawing on file at the Architects' office can be reproduced with the architects permission only. If someone wishes to copy this plan; contact John Hanna (312) 750-1800

ISSUED FOR REVIEW _____
ISSUED FOR REVIEW 09.18.19 _____
ISSUED FOR PERMIT _____
ISSUED FOR BID _____
ISSUED FOR CONSTN _____

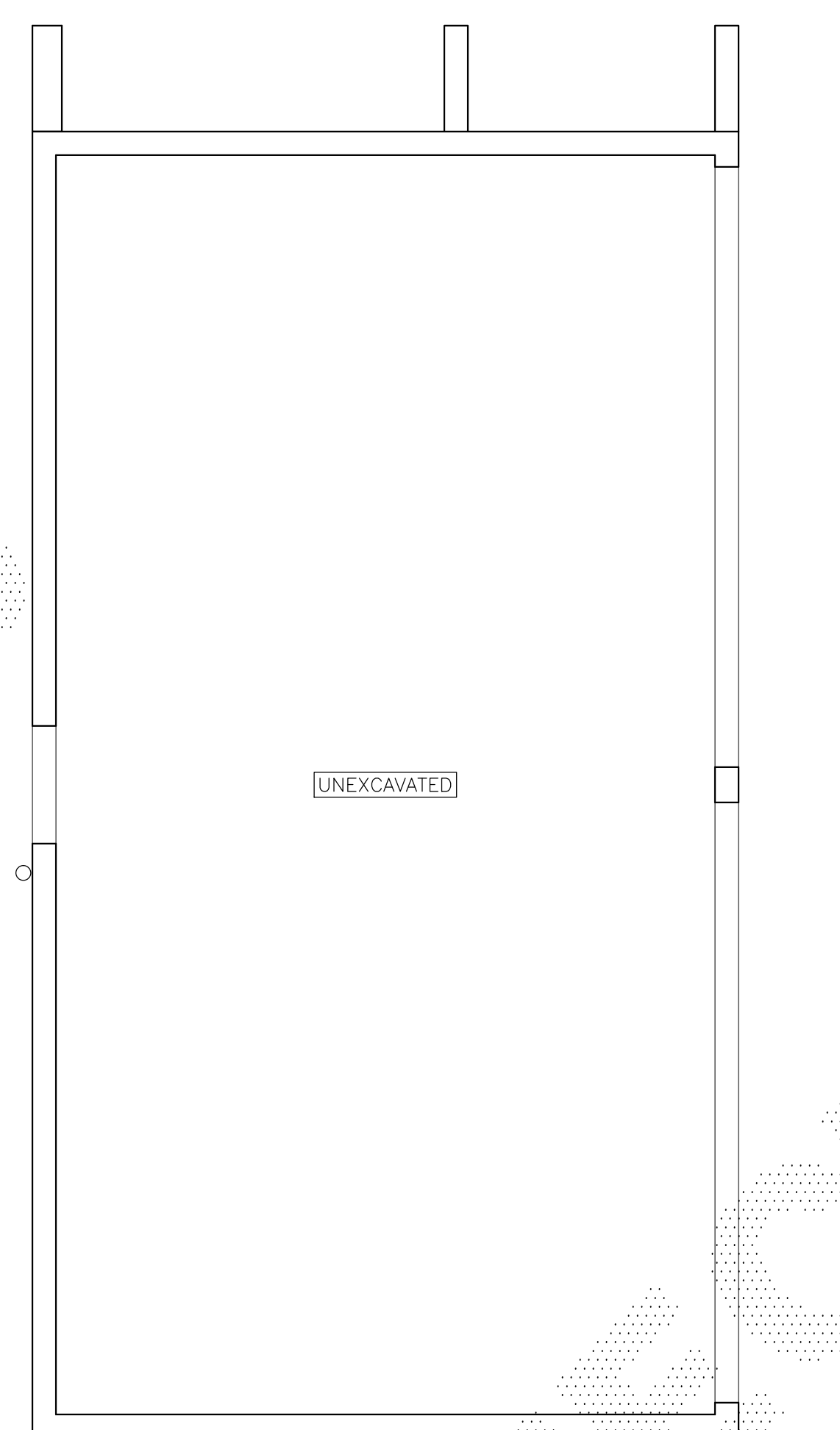
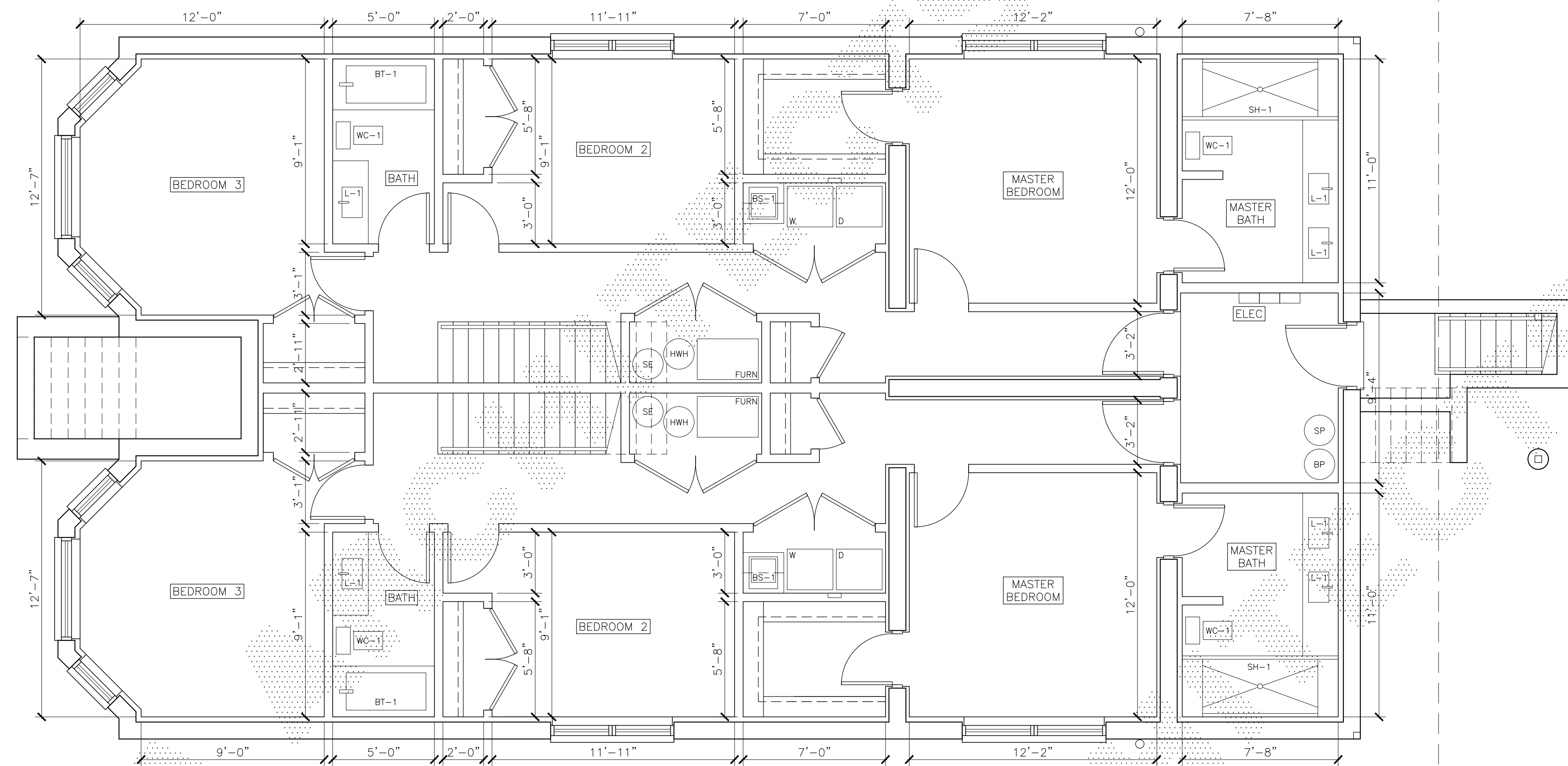


PROJECT NAME & ADDRESS
2418 W. LYNDALE
3 STORY/4 UNIT
BUILDING
CHICAGO, ILLINOIS

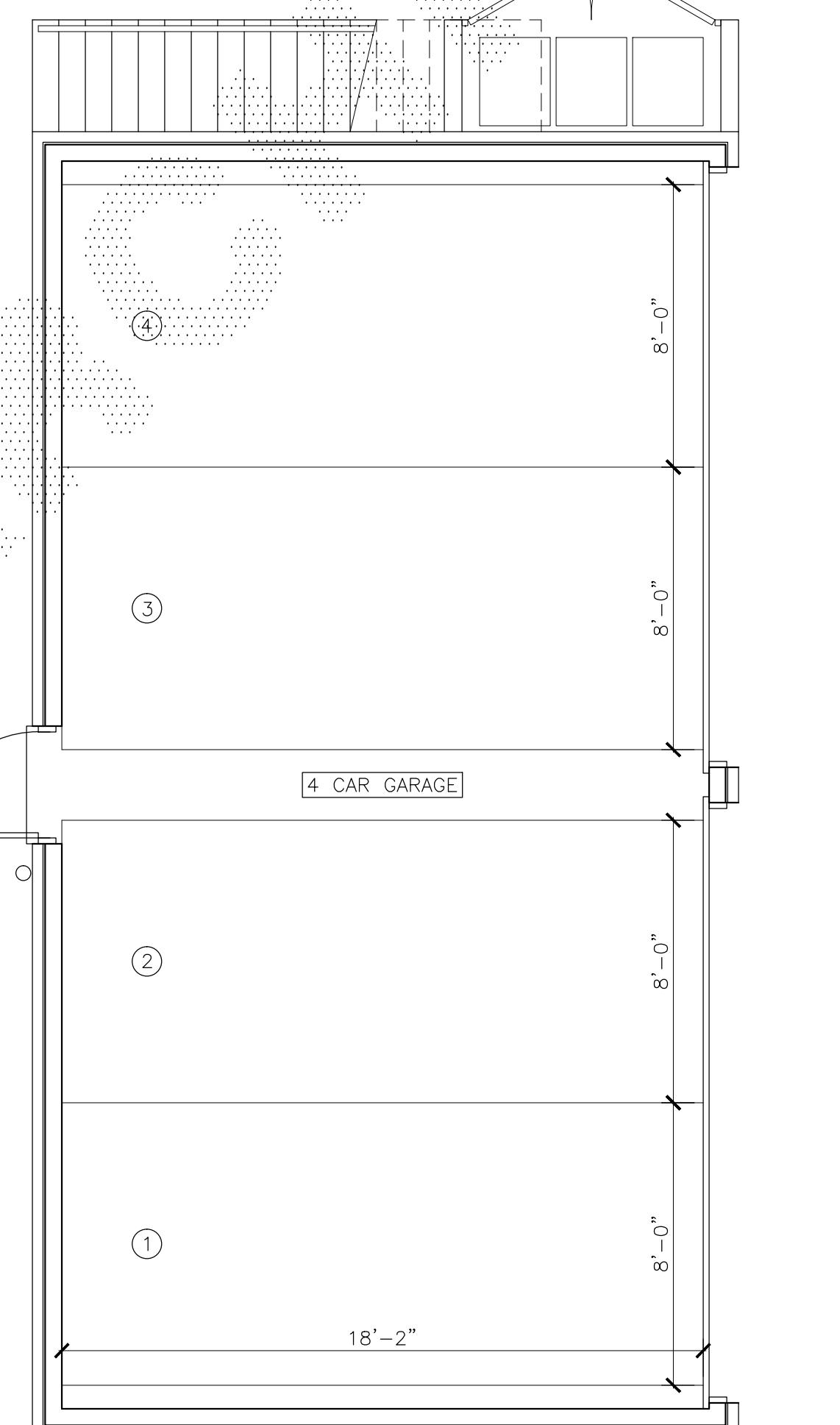
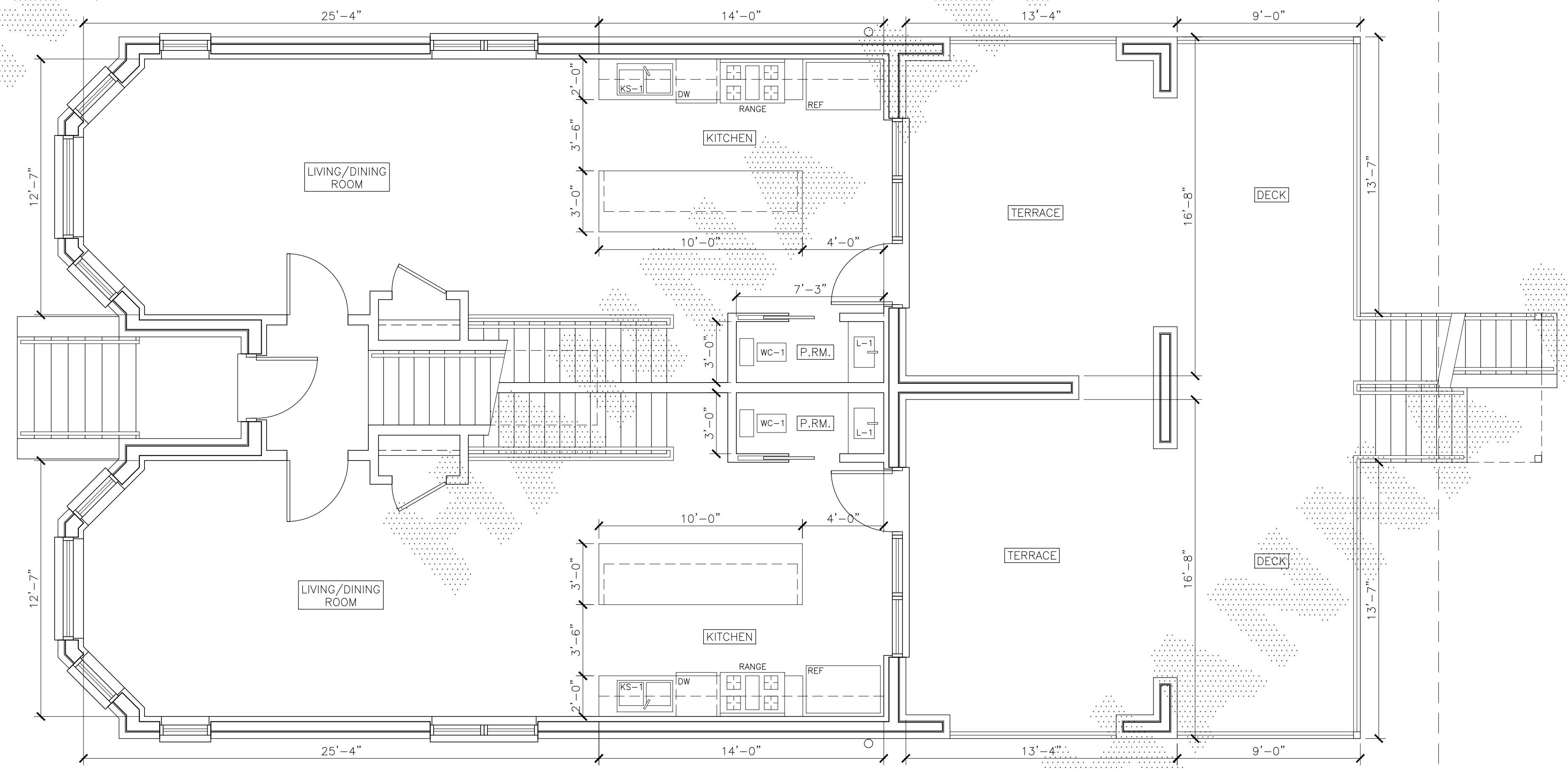
SHEET TITLE
SITE PLAN

FILENAME

SHEET NUMBER
A-1



BASEMENT FLOOR PLAN
SCALE: 1/4" = 1'-0"



FIRST FLOOR PLAN
SCALE: 1/4" = 1'-0"



(312) 750-1800
180 W. WASHINGTON
CHICAGO, ILLINOIS 60602
FAX (312) 750-1801
PROFESSIONAL DESIGN FIRM
ARCHITECT CORPORATION
LICENSE NUMBER: 184 - 001485

WARNING:
This plan Protected under Copyright
Laws. Original mylar drawing on file
at the Architects' office can be
reproduced with the Architects
permission only. If someone wishes
to copy this plan; contact John Hanna
(312) 750-1800

ISSUED FOR REVIEW
ISSUED FOR REVIEW 09.18.19
ISSUED FOR PERMIT
ISSUED FOR BID
ISSUED FOR CONSTN

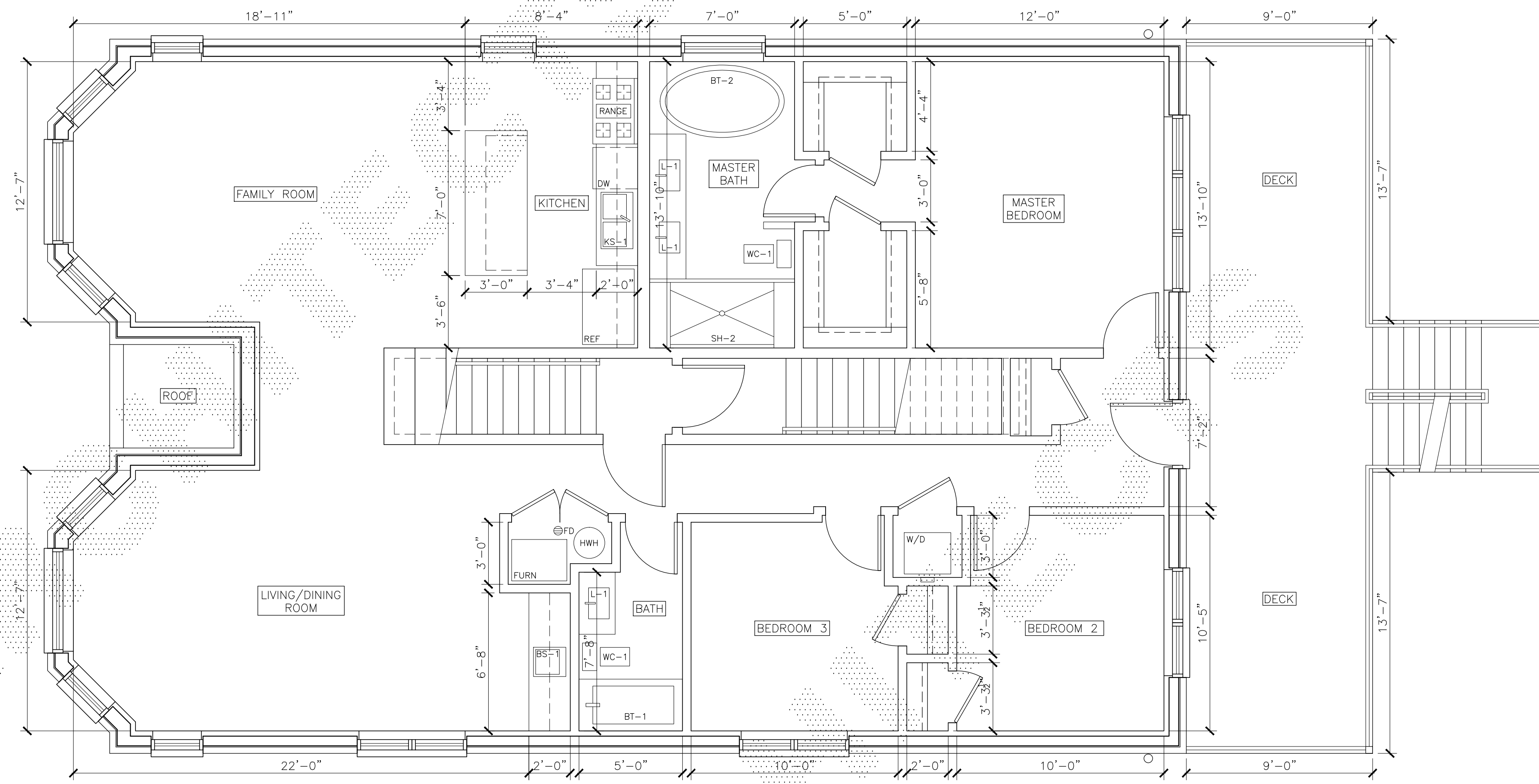


PROJECT NAME & ADDRESS
2418 W. LYNDALE
3 STORY/4 UNIT
BUILDING
CHICAGO, ILLINOIS

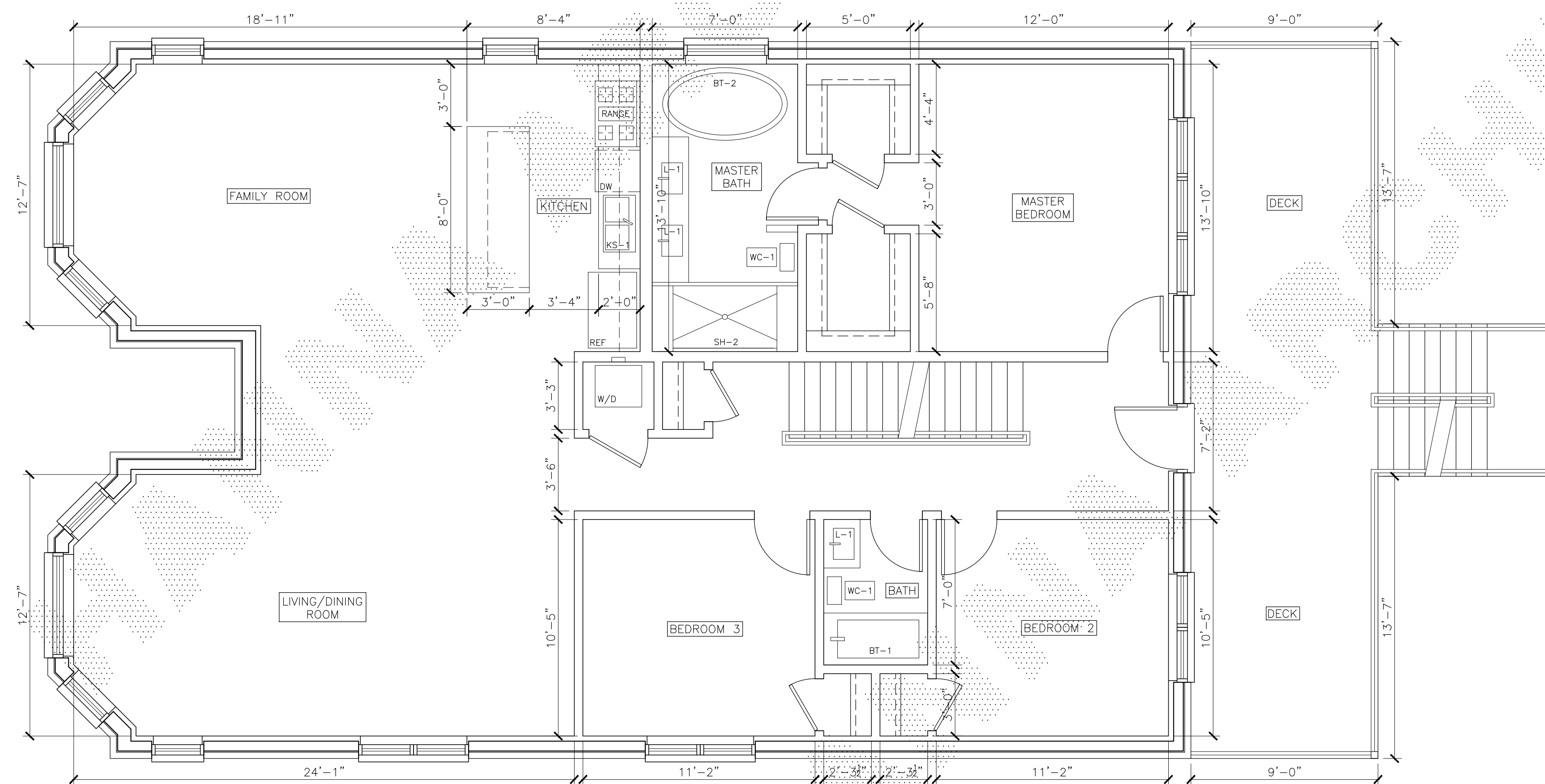
SHEET TITLE
FLOOR PLANS

FILENAME

SHEET NUMBER
A-2



⊕ SECOND FLOOR PLAN
SCALE: 1/4" = 1'-0"



⊕ THIRD FLOOR PLAN
SCALE: 1/4" = 1'-0"



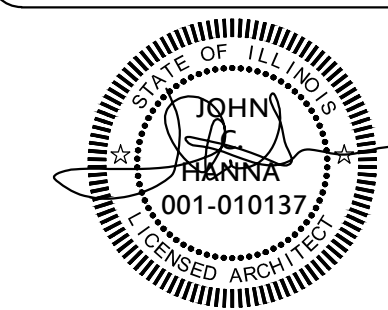
(312) 750-1800

180 W. WASHINGTON
CHICAGO, ILLINOIS 60602
FAX (312) 750-1801

PROFESSIONAL DESIGN FIRM
ARCHITECT CORPORATION
LICENSE NUMBER: 184 - 001485

WARNING:
This plan Protected under Copyright
Laws. Original mylar drawing on file
at the Architects' office can be
reproduced with the architects
permission only. If someone wishes
to copy this plan; contact John Hanna
(312) 750-1800

ISSUED FOR REVIEW _____
ISSUED FOR REVIEW 09.18.19 _____
ISSUED FOR PERMIT _____
ISSUED FOR BID _____
ISSUED FOR CONSTN _____

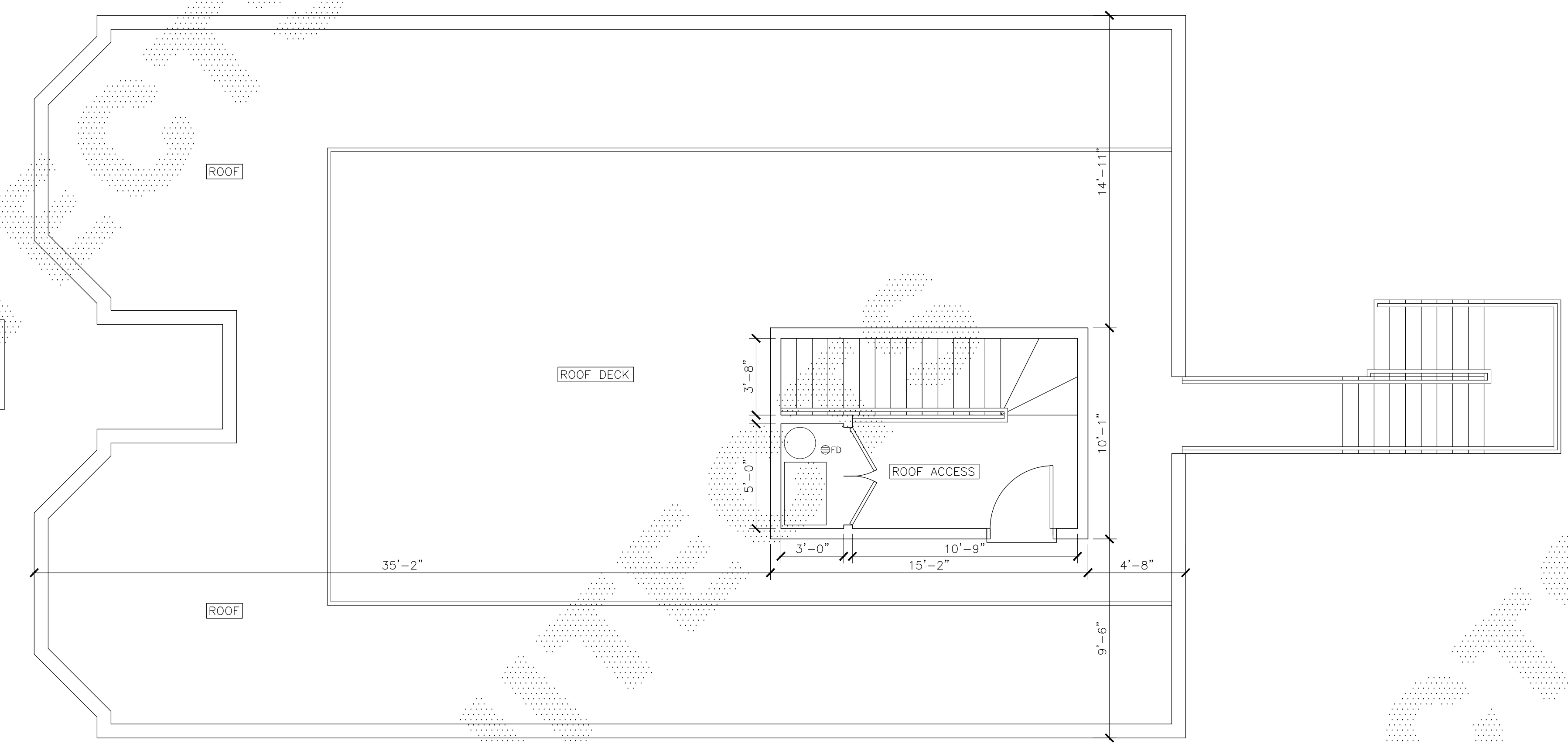
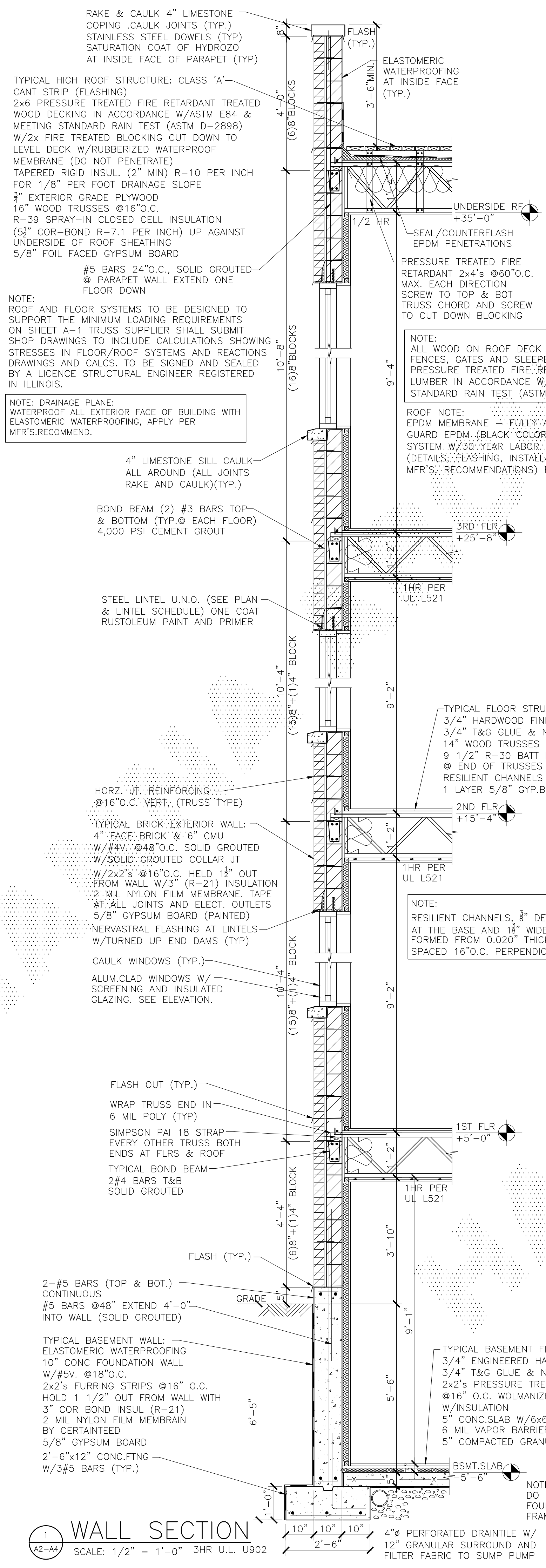


PROJECT NAME & ADDRESS
2418 W. LYNDALE
3 STORY/4 UNIT
BUILDING
CHICAGO, ILLINOIS

SHEET TITLE
FLOOR PLANS

FILENAME

SHEET NUMBER
A-3



ROOF DECK FLOOR PLAN
SCALE: 1/4" = 1'-0"

1 WALL SECTION
SCALE: 1/2" = 1'-0" 3HR U.L. U902

TYPICAL BASEMENT FLOOR:
3/4" ENGINEERED HARDWOOD FLR
3/4" T&G GLUE & NAIL PLYWOOD
2x2's PRESSURE TREATED SLEEPERS
@16" O.C. WOLMANIZED LUMBER
W/INSULATION
5" CONC.SLAB W/6x6-W2.1xW2.1 WWF
6 MIL VAPOR BARRIER
5" COMPACTED GRANULAR FILL

NOTE:
RESILIENT CHANNELS, 3/8" DEEP BY 2 1/2" WIDE
AT THE BASE AND 1 1/2" WIDE AT FACE,
FORMED FROM 0.020" THICK GALV. STEEL,
SPACED 16" O.C. PERPENDICULAR TO TRUSSES.

NOTE:
ALL WOOD ON ROOF DECK INCLUDING HANDRAIL,
FENCES, GATES AND SLEEPER BLOCKING TO BE
PRESSURE TREATED FIRE RETARDANT TREATED
LUMBER IN ACCORDANCE W/ASTM E84 AND MEETING
STANDARD RAIN TEST (ASTM D-2898) (TYP.)

NOTE:
PRESSURE TREATED FIRE
RETARDANT 2x4's @60"O.C.
MAX. EACH DIRECTION
SCREW TO TOP & BOT
TRUSS CHORD AND SCREW
TO CUT DOWN BLOCKING

NOTE:
ROOF AND FLOOR SYSTEMS TO BE DESIGNED TO
SUPPORT THE MINIMUM LOADING REQUIREMENTS
ON SHEET A-1 TRUSS SUPPLIER SHALL SUBMIT
SHOP DRAWINGS TO INCLUDE CALCULATIONS SHOWING
STRESSES IN FLOOR/ROOF SYSTEMS AND REACTIONS
DRAWINGS AND CALCS. TO BE SIGNED AND SEALED
BY A LICENSE STRUCTURAL ENGINEER REGISTERED
IN ILLINOIS.

NOTE: DRAINAGE PLANE:
WATERPROOF ALL EXTERIOR FACE OF BUILDING WITH
ELASTOMERIC WATERPROOFING, APPLY PER
MFR'S.RECOMMEND.

HANNA ARCHITECTS, INC.
(312) 750-1800
180 W. WASHINGTON
CHICAGO, ILLINOIS 60602
FAX (312) 750-1801
PROFESSIONAL DESIGN FIRM
ARCHITECT CORPORATION
LICENSE NUMBER:184 - 001485

WARNING:
This plan Protected under Copyright
Laws. Original mylar drawing on file
at the Architects' office can be
reproduced with the architects
permission only. If someone wishes
to copy this plan; contact John Hanna
(312) 750-1800

ISSUED FOR REVIEW	
ISSUED FOR REVIEW	09.18.19
ISSUED FOR PERMIT	
ISSUED FOR BID	
ISSUED FOR CONSTN	

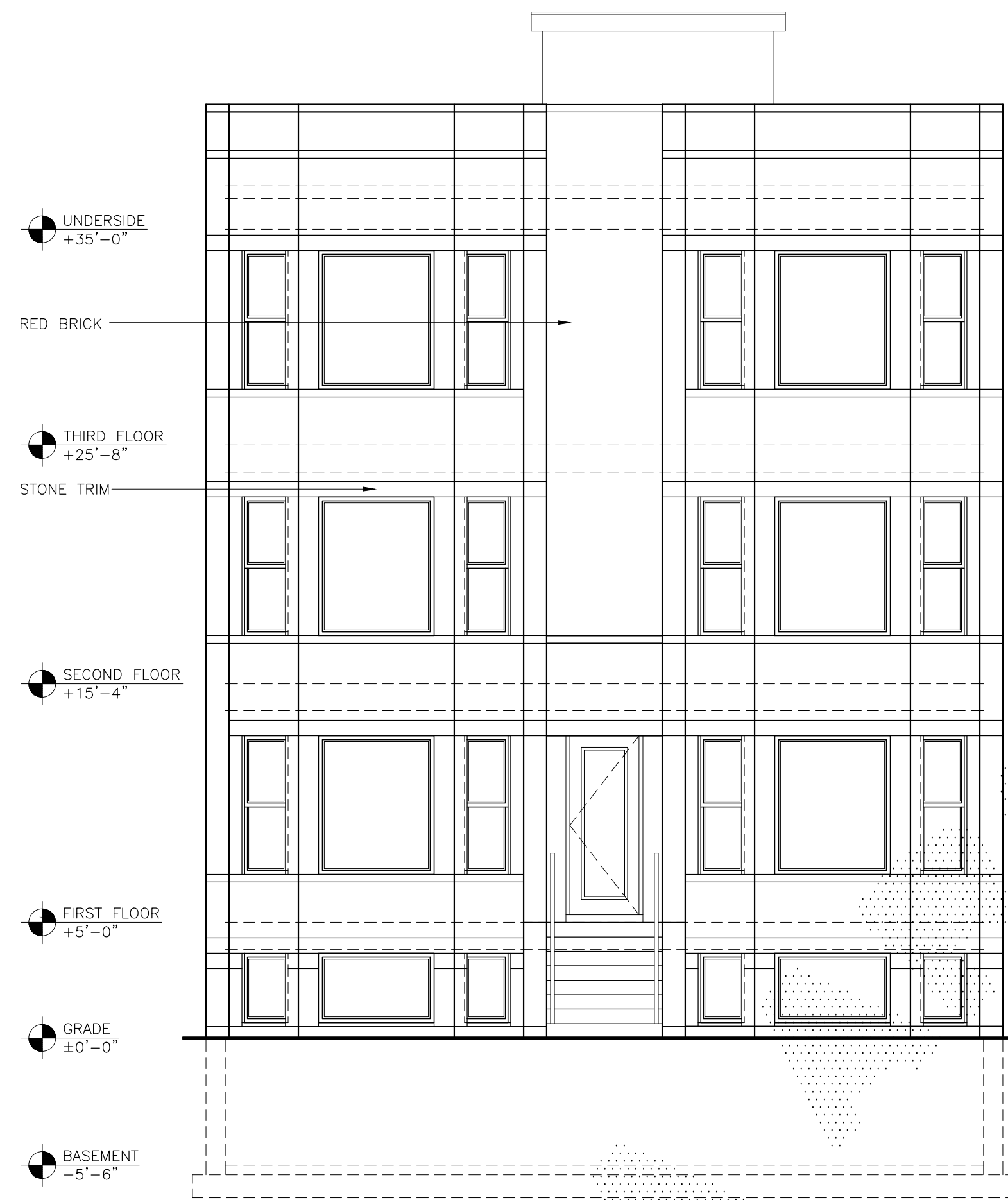


PROJECT NAME & ADDRESS
**2418 W. LYNDALE
3 STORY/4 UNIT
BUILDING
CHICAGO, ILLINOIS**

SHEET TITLE
**ROOF PLAN &
DETAILS**

FILENAME

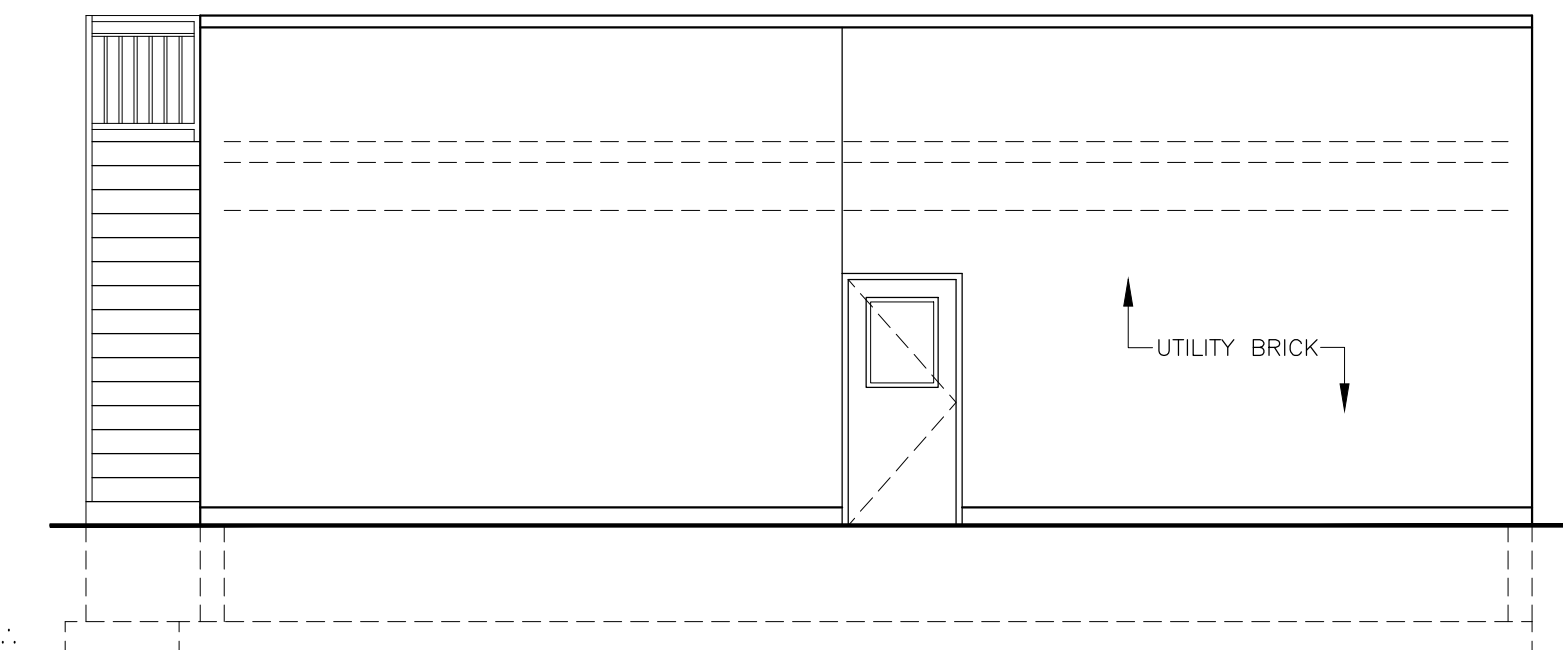
SHEET NUMBER
A-4



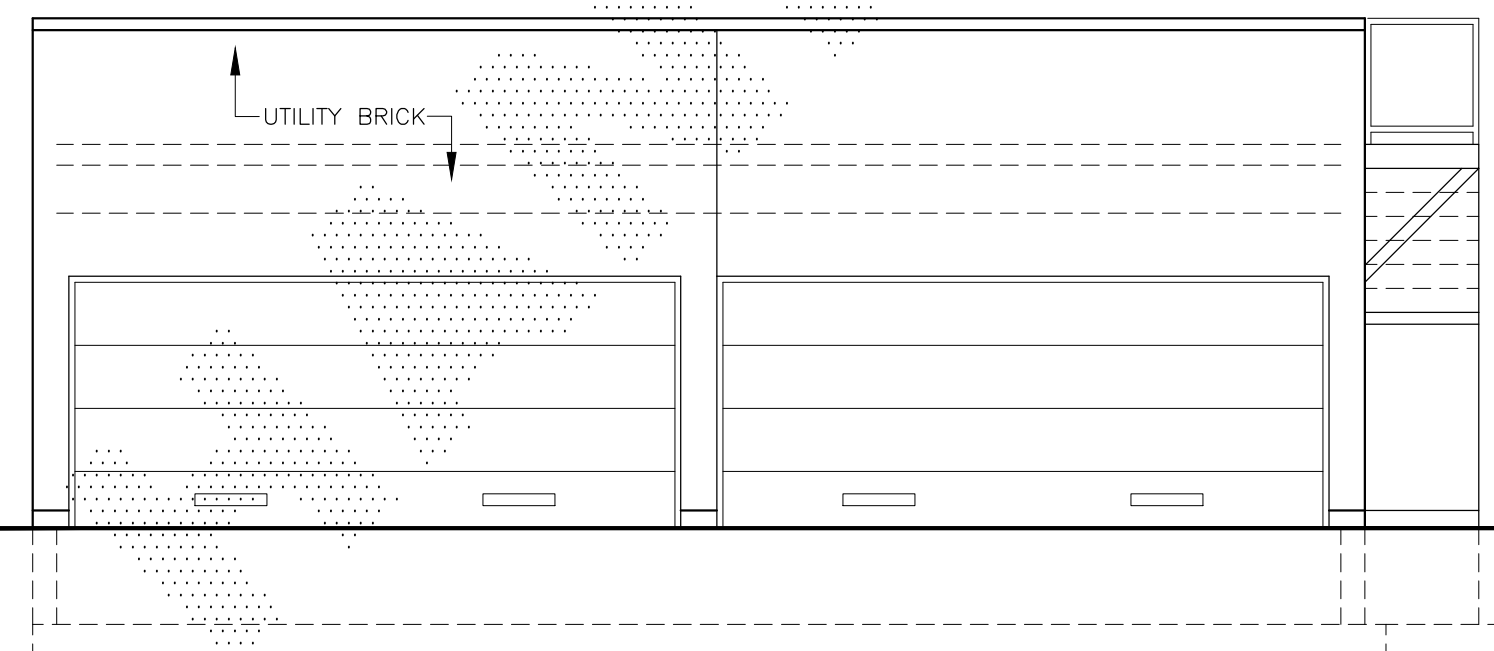
SOUTH ELEVATION
SCALE: 3/16" = 1'-0"



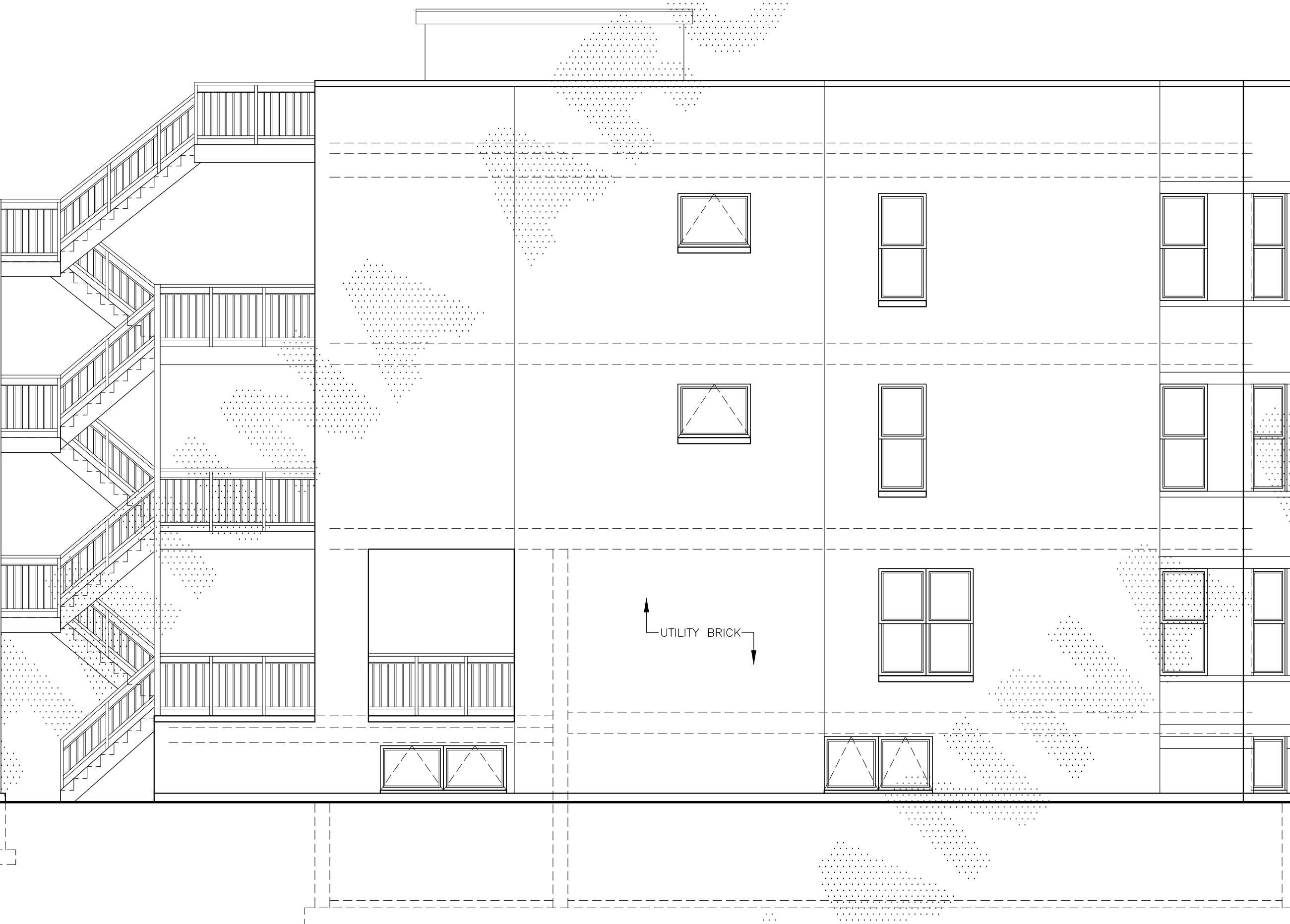
EAST ELEVATION
SCALE: 3/16" = 1'-0"



SOUTH GARAGE ELEVATION
SCALE: 3/16" = 1'-0"



NORTH GARAGE ELEVATION
SCALE: 3/16" = 1'-0"



WEST ELEVATION
SCALE: 3/16" = 1'-0"



NORTH ELEVATION
SCALE: 3/16" = 1'-0"



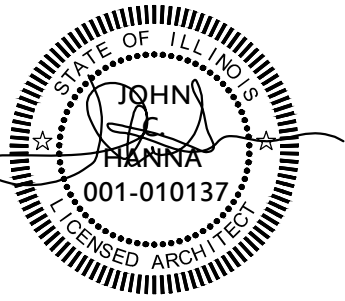
(312) 750-1800

180 W. WASHINGTON
CHICAGO, ILLINOIS 60602
FAX (312) 750-1801

PROFESSIONAL DESIGN FIRM
ARCHITECT CORPORATION
LICENSE NUMBER: 184 - 001485

WARNING:
This plan Protected under Copyright
Laws. Original mylar drawing on file
at the Architects' office can be
reproduced with the Architects
permission only. If someone wishes
to copy this plan; contact John Hanna
(312) 750-1800

ISSUED FOR REVIEW
ISSUED FOR REVIEW 09.18.19
ISSUED FOR PERMIT
ISSUED FOR BID
ISSUED FOR CONSTN



PROJECT NAME & ADDRESS
2418 W. LYNDALE
3 STORY/4 UNIT
BUILDING
CHICAGO, ILLINOIS

SHEET TITLE
ELEVATIONS

FILENAME

SHEET NUMBER
A-5