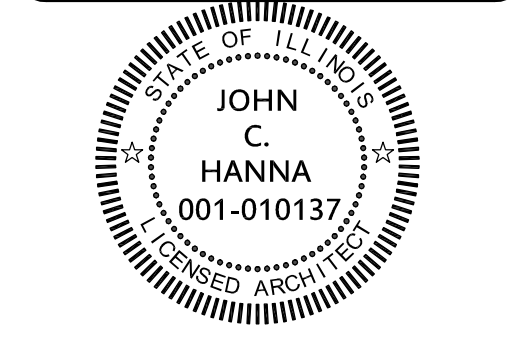


**HANNA ARCHITECTS, INC.**  
(312) 750-1800  
180 W. WASHINGTON  
CHICAGO, ILLINOIS 60602  
FAX (312) 750-1801  
PROFESSIONAL DESIGN FIRM  
ARCHITECT CORPORATION  
LICENSE NUMBER 184 - 001485

**WARNING:**  
This plan Protected under Copyright  
Laws. Original mylar drawing on file  
at the Architects' office can be  
reproduced with the Architects  
permission only. If someone wishes  
to copy this plan, contact John Hanna  
(312) 750-1800

ISSUED FOR REVIEW  
ISSUED FOR REVIEW  
ISSUED FOR PERMIT FEBRUARY 23, 2017  
ISSUED FOR BID



**PROJECT NAME & ADDRESS**  
2424 W. LYNDAL ST  
4 UNIT 3 STORY  
MAS. BLDG. W/BSMT  
CHICAGO, ILLINOIS

**SHEET TITLE**  
ROOF DECK  
AND WALL  
SECTIONS

**FILENAME**

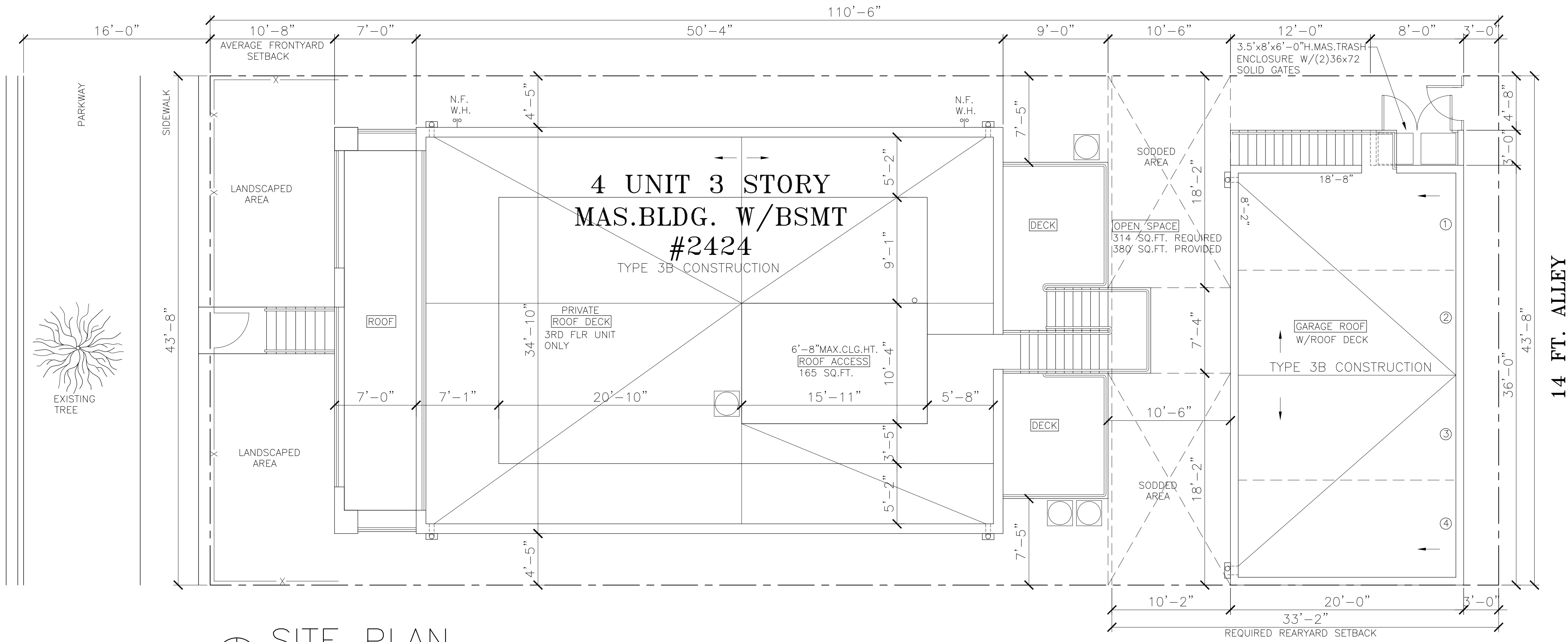
**SHEET NUMBER**  
A-4

AVERAGE FRONTYARD SETBACK CALC:  
 $12.61' + 8.81' + 10.57' = 31.99'$   
 $31.99' \text{ DIV. BY } 3 = 10.66'$

**ZONING DATA:**

LOT AREA - 43.68' x 110.50' = 4,826 SQ.FT.  
 F.A.R. - RT-4 1.15  
 MAX. BUILDABLE - 5,550 SQ.FT.  
 BUILDING SQUARE FOOTAGE:  
 1ST FLOOR - 1,998.00 SQ.FT.  
 2ND FLOOR - 1,755.00 SQ.FT.  
 3RD FLOOR - 1,755.00 SQ.FT.  
 TOTAL = 5,508.00 SQ.FT.

W. LYNDALE ST  
 ONE WAY



**SITE PLAN**  
 SCALE: 3/16" = 1'-0"



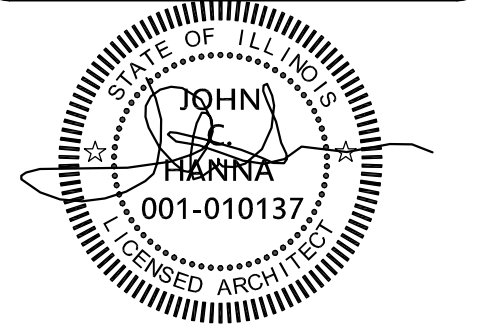
(312) 750-1800

180 W. WASHINGTON  
 CHICAGO, ILLINOIS 60602  
 FAX (312) 750-1801

PROFESSIONAL DESIGN FIRM  
 ARCHITECT CORPORATION  
 LICENSE NUMBER 184 - 001485

WARNING:  
 This plan Protected under Copyright  
 Laws. Original mylar drawing on file  
 at the Architects' office can be  
 reproduced with the Architects  
 permission only. If someone wishes  
 to copy this plan; contact John Hanna  
 (312) 750-1800

ISSUED FOR REVIEW  
 ISSUED FOR REVIEW  
 ISSUED FOR PERMIT FEBRUARY 8, 2017  
 ISSUED FOR BID

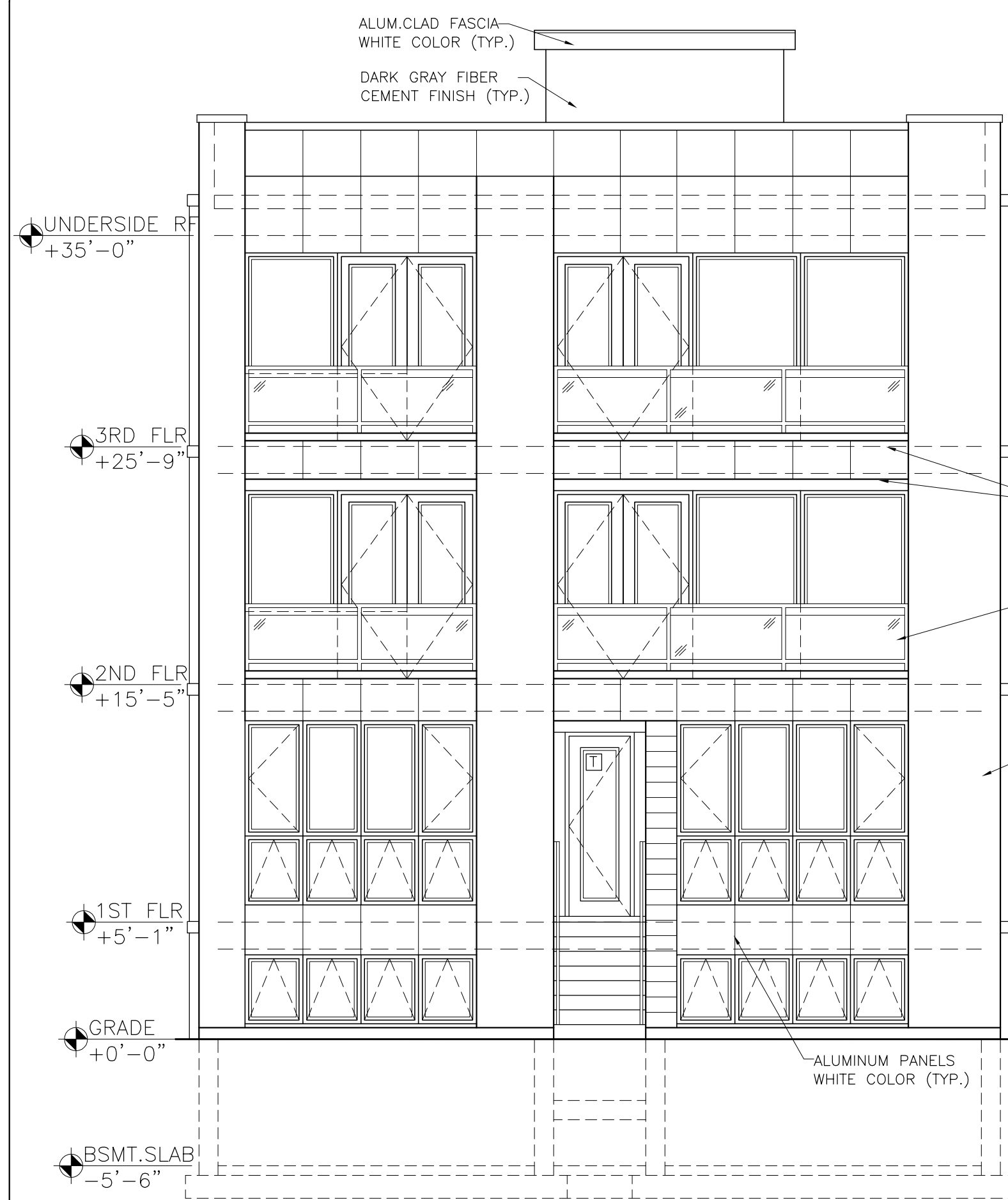


PROJECT NAME & ADDRESS  
 2424 W. LYNDALE ST  
 4 UNIT 3 STORY  
 MAS.BLDG. W/BSMT  
 CHICAGO, ILLINOIS

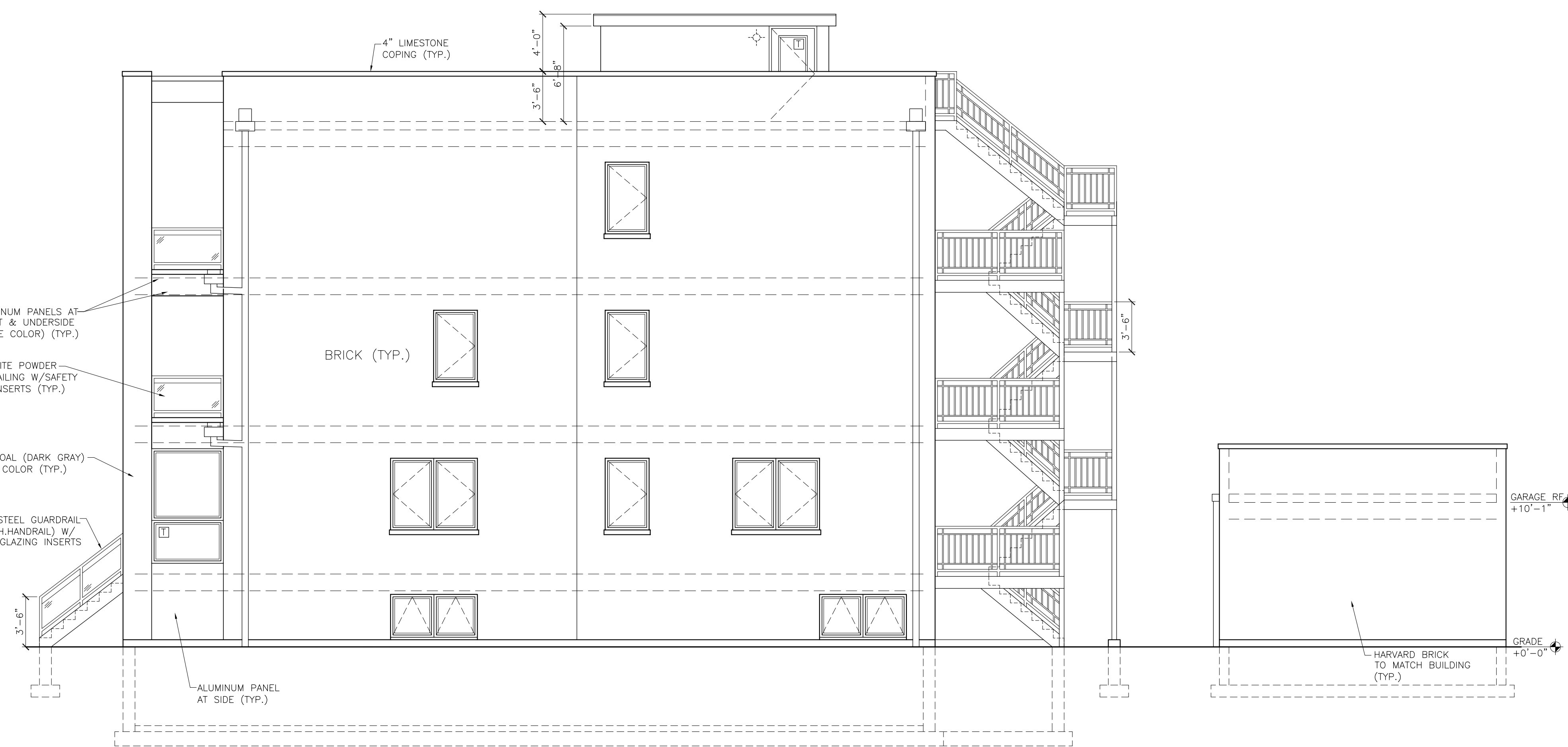
SHEET TITLE  
 SITE PLAN  
 & NOTES

FILENAME

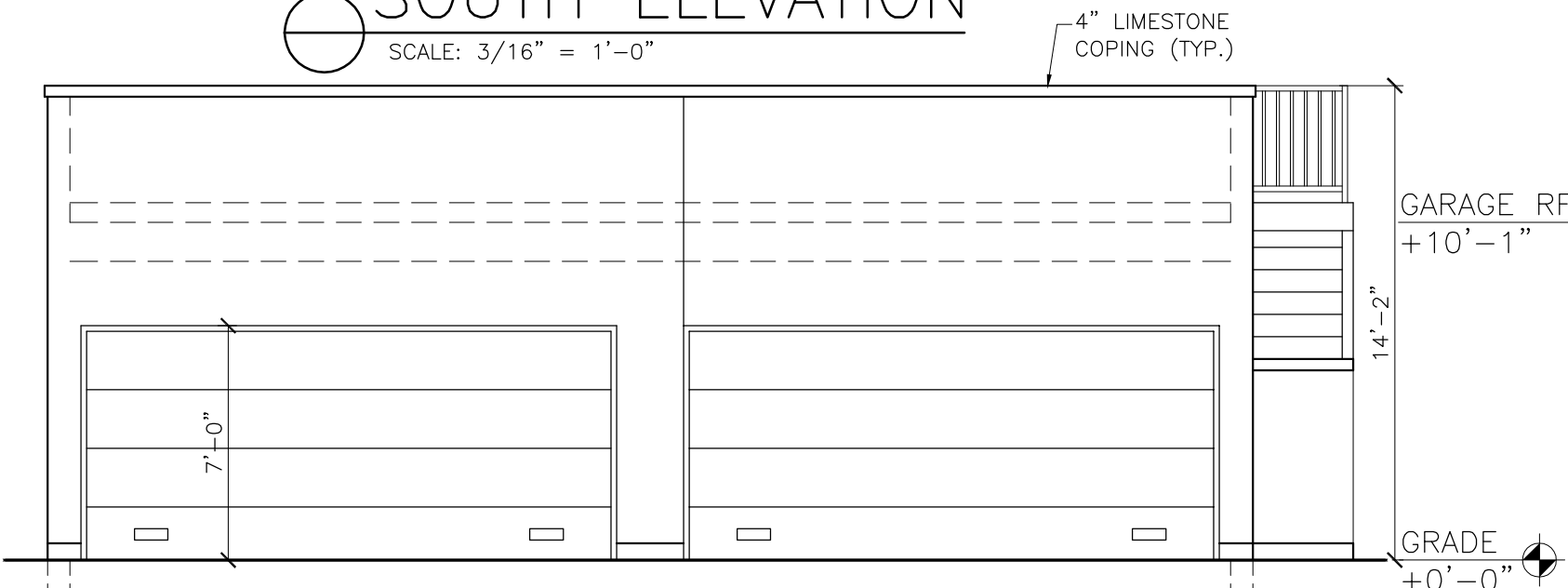
SHEET NUMBER  
 A-1



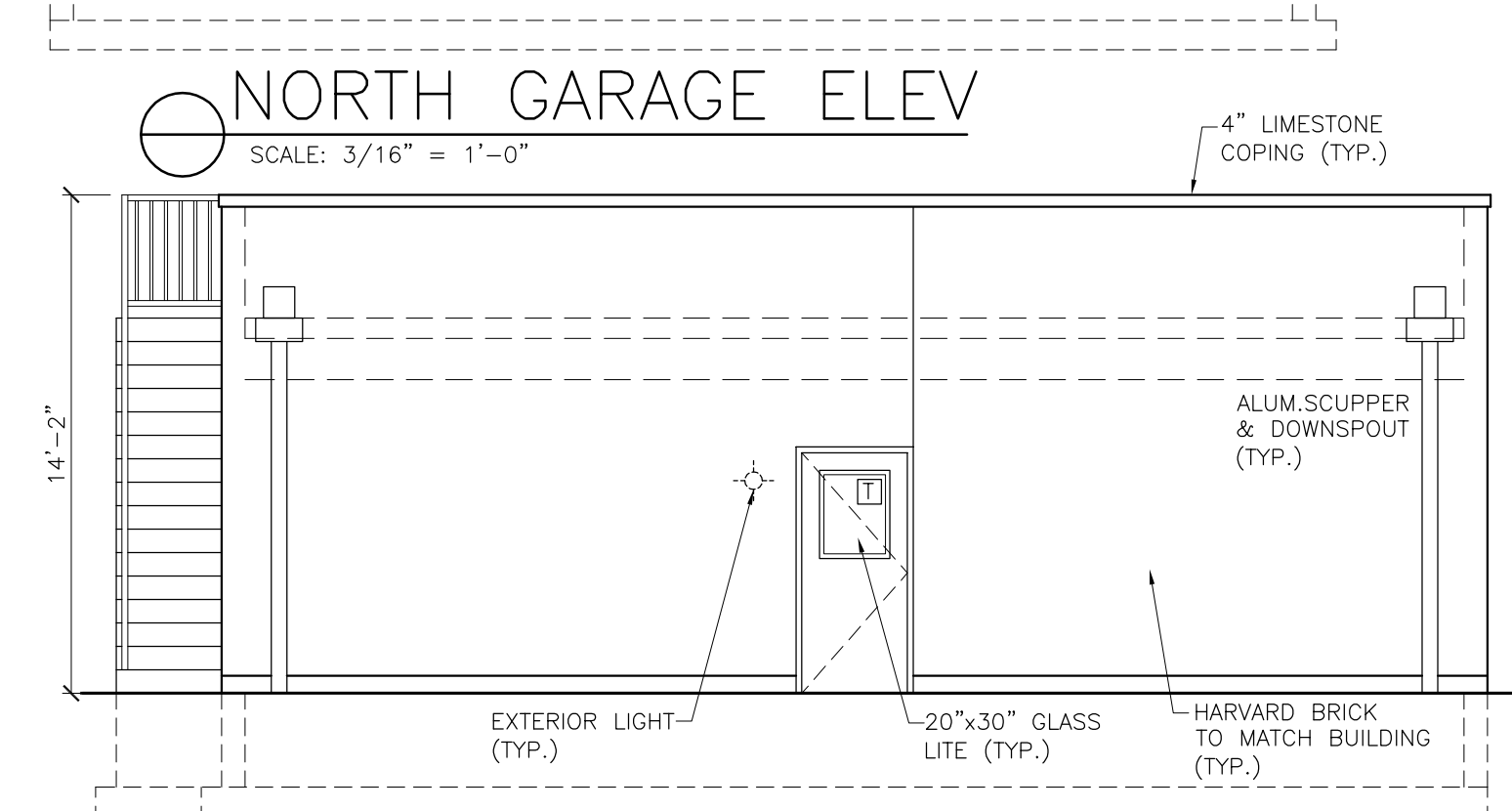
**SOUTH ELEVATION**  
SCALE: 3/16" = 1'-0"



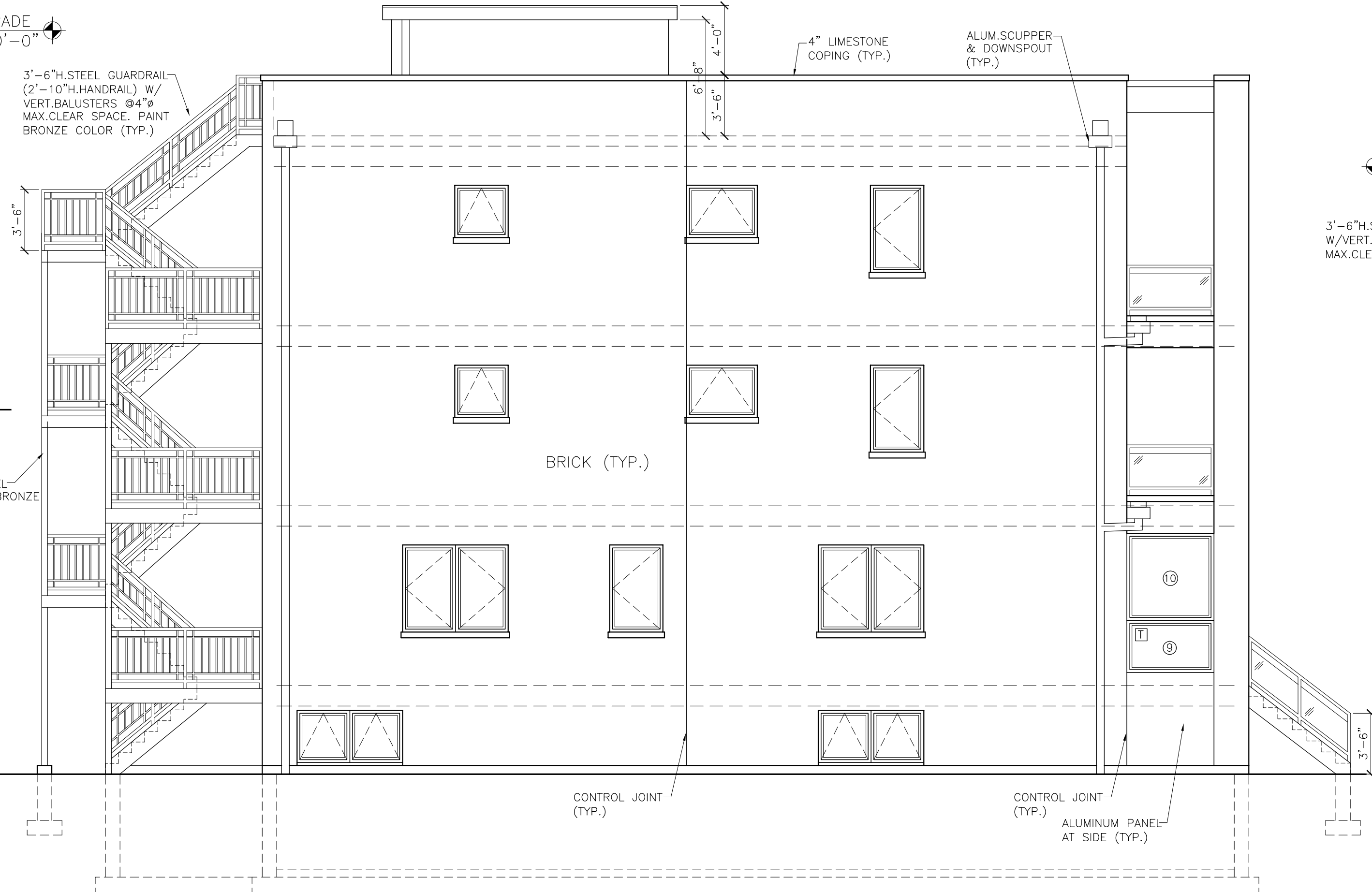
**EAST ELEVATION**  
SCALE: 3/16" = 1'-0"



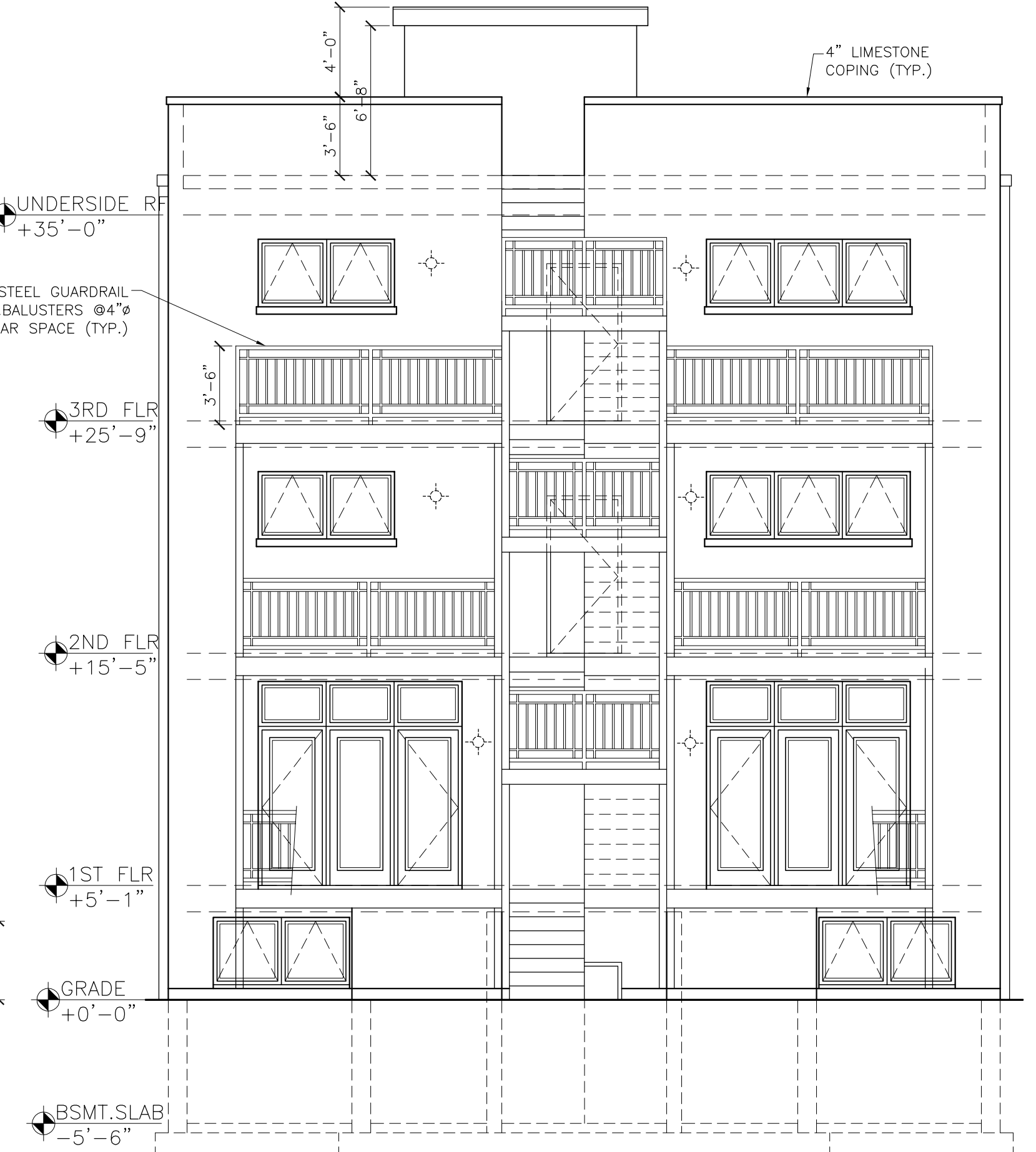
**NORTH GARAGE ELEV**  
SCALE: 3/16" = 1'-0"



**SOUTH GARAGE ELEV**  
SCALE: 3/16" = 1'-0"



**WEST ELEVATION**  
SCALE: 3/16" = 1'-0"



**NORTH ELEVATION**  
SCALE: 3/16" = 1'-0"



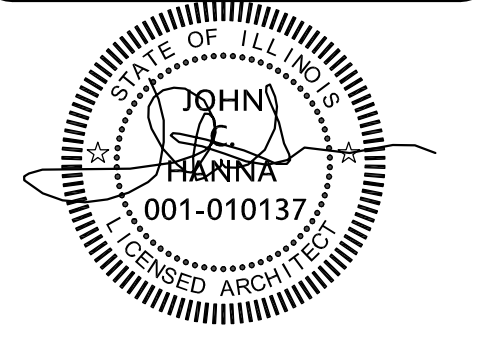
(312) 750-1800

180 W. WASHINGTON  
CHICAGO, ILLINOIS 60602  
FAX (312) 750-1801

PROFESSIONAL DESIGN FIRM  
ARCHITECT CORPORATION  
LICENSE NUMBER 184 - 001485

**WARNING:**  
This plan Protected under Copyright Laws. Original mylar drawing on file at the Architects' office can be reproduced with the Architects' permission only. If someone wishes to copy this plan; contact John Hanna (312) 750-1800

ISSUED FOR REVIEW  
ISSUED FOR REVIEW  
ISSUED FOR PERMIT FEBRUARY 23, 2017  
ISSUED FOR BID



**PROJECT NAME & ADDRESS**  
2424 W. LYNDAL ST  
4 UNIT 3 STORY  
MAS.BLDG. W/BSMT  
CHICAGO, ILLINOIS

**SHEET TITLE**  
BUILDING ELEVATIONS

**FILENAME**

**SHEET NUMBER**  
A-5

**ELECTRICAL SYMBOLS**

- ⊞ SINGLE POLE SWITCH
- ⊞ 3-WAY SWITCH
- ⊞ DUPLEX CONV. OUTLET 15" AFF (U.N.O.)
- ⊞ DUPLEX CONV. OUTLET 36" AFF
- ⊞ WATERPROOF OUTLET
- ⊞ GROUND FAULT OUTLET
- ⊞ DIRECT CONNECT TO APPLIANCE
- ⊞ WALL FIXTURE
- ⊞ RECESSED DOWNLIGHT
- ⊞ DOUBLE WALL FLOOD LIGHTS
- ⊞ EXHAUST FAN
- ⊞ CEILING FAN AND LIGHT
- ⊞ MOTOR
- ⊞ SMOKE DETECTOR (110 V.)
- ⊞ CARBON MONOXIDE DETECTOR
- \*ALL CONTROLS SHALL BE NO HIGHER THAN 48" ABOVE FINISHED FLOOR

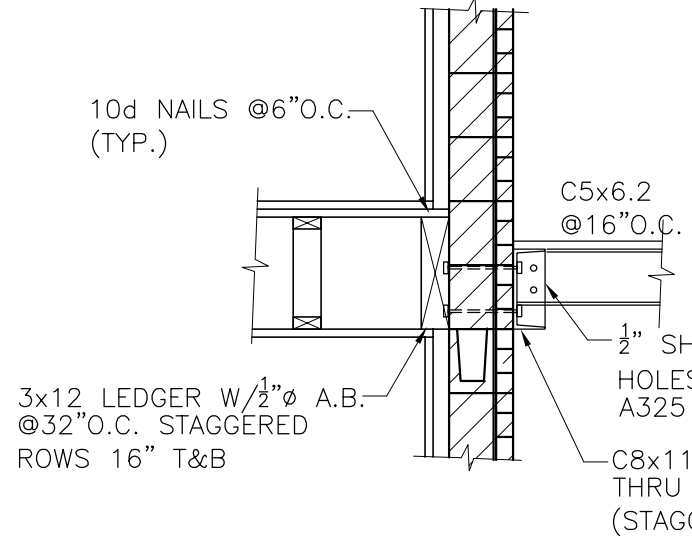
**LEGEND**

- ⊞ SURFACE MOUNT MEDICINE CABINET W/STRIP LIGHT ABOVE
- ⊞ GFI GROUND FAULT INTERRUPTER
- ⊞ OVERHEAD LIGHT FIXTURE
- ⊞ LINTEL DESIGNATION (SEE SCHEDULE)
- N.F.W.H. - NON-FREEZE WALL HYDRANT
- U.N.O. - UNLESS NOTED OTHERWISE
- V.I.F. - VERIFY IN FIELD

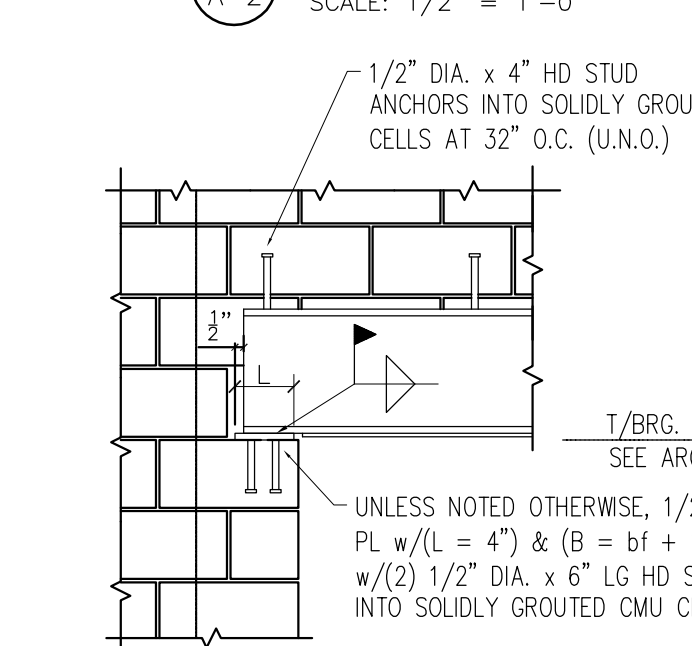
**WALL SYMBOLS**

- 2x4 WOOD WALL STUDS @16" O.C.
- W/ 5/8" GYPSUM BOARD BOTH SIDES (UNLESS NOTED OTHERWISE)
- \* CONCRETE BLOCK
- \* FACE BRICK W/CONCRETE BLOCK
- \* SOLID CONCRETE BLOCK

\* COMPLY WITH UNDERWRITERS LABORATORIES TEST DATA FIRE RATED DESIGNS FOR ALL SPECIFIED FIRE RATED CONSTRUCTION (TYP.).

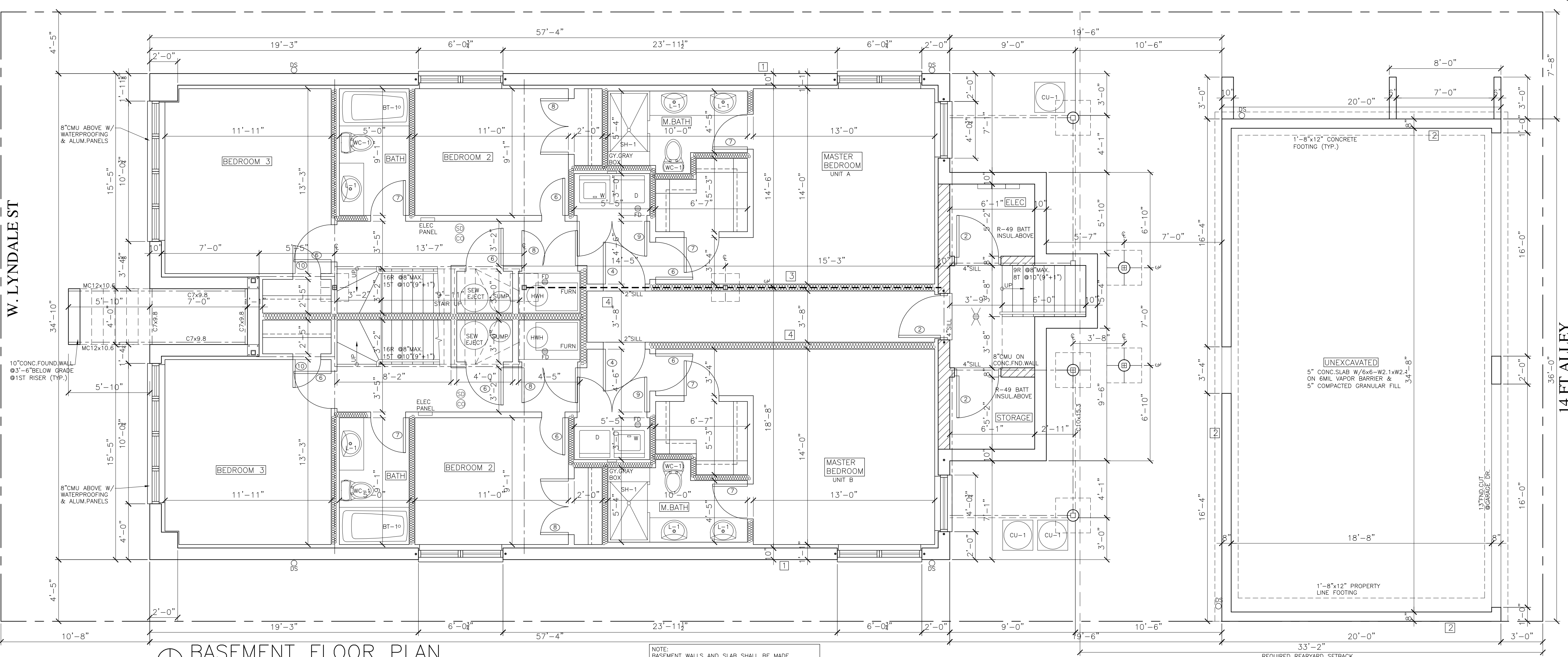


**LEDGER DETAIL**



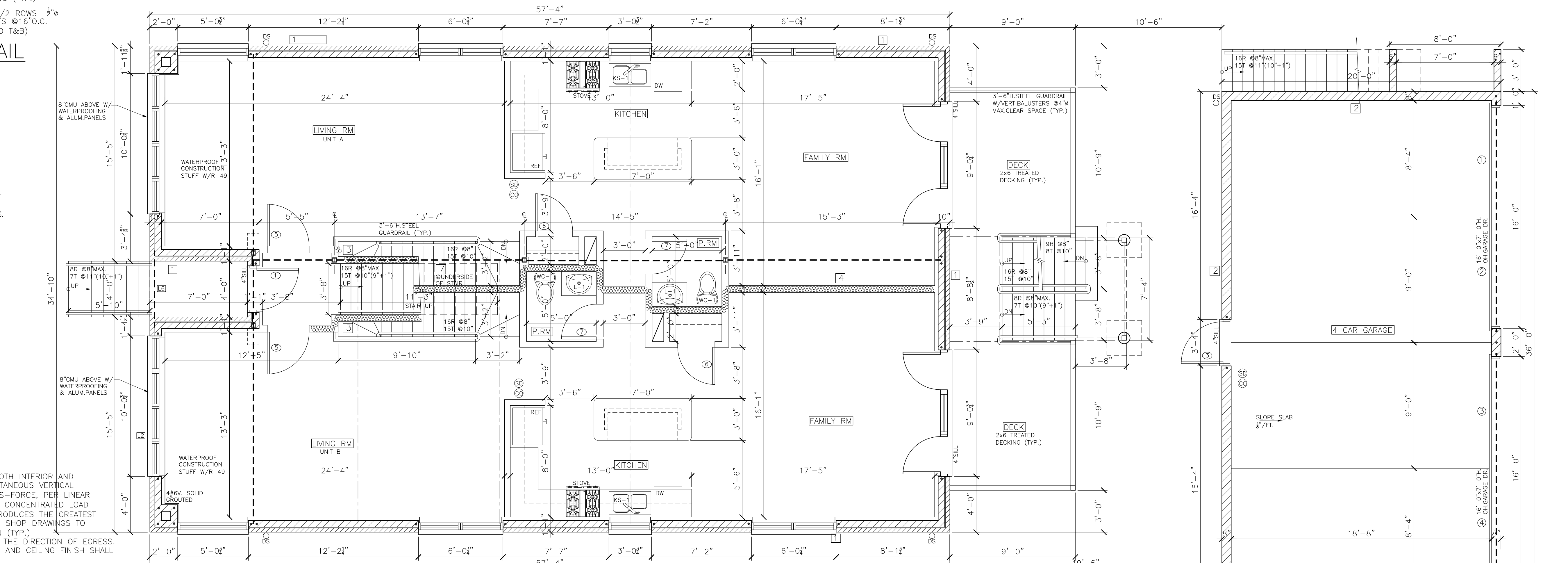
**LINTEL BRG.**

- NOTES:**
1. STAIRWAY, PORCH, DECK AND BALCONY RAILING, BOTH INTERIOR AND EXTERIOR SHALL BE DESIGNED TO RESIST A SIMULTANEOUS VERTICAL AND HORIZONTAL THRUST OF 50 LBS./FT. (POUNDS-FORCE, PER LINEAR FOOT) APPLIED AT THE TOP OF THE RAILING OR A CONCENTRATED LOAD OF 200 LBS./FT. IN ANY DIRECTION WHICHEVER PRODUCES THE GREATEST STRESS. SHALL SUBMIT SEALED CALCULATIONS AND SHOP DRAWINGS TO THE ARCHITECT FOR REVIEW PRIOR TO FABRICATION (TYP.)
  2. ALL REQUIRED EXIT DOORS SHALL BE KEYLESS IN THE DIRECTION OF EGRESS.
  3. ALL MATERIALS AT STAIRWELLS FOR INTERIOR WALL AND CEILING FINISH SHALL BE CLASS I FLAME SPREAD RATING.
  4. VERIFY ALL EQUIPMENT DIMENSIONS BEFORE CONSTRUCTING WALL PARTITIONS.
  5. STRUCTURE SHOWN AT EACH FLOOR IS FLOOR STRUCTURE ABOVE.
  6. VERIFY ALL DIMENSIONS IN THE FIELD.
  7. USE DUROCK TILE BACKER BOARD AT ALL SHOWERS & WHIRLPOOLS.
  8. ALL COMMON STAIRS TO BE NON-COMBUSTIBLE CONC.FILLED METAL PAN.
  9. CAULK ALL EXTERIOR PENETRATIONS.



**BASEMENT FLOOR PLAN**

SCALE: 1/4" = 1'-0"



**FIRST FLOOR PLAN**

SCALE: 1/4" = 1'-0"



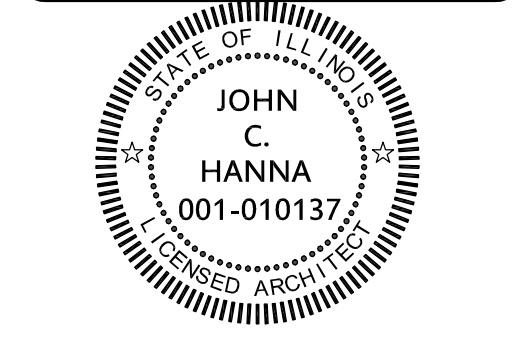
(312) 750-1800

180 W. WASHINGTON  
CHICAGO, ILLINOIS 60602  
FAX (312) 750-1801

PROFESSIONAL DESIGN FIRM  
ARCHITECT CORPORATION  
LICENSE NUMBER 184 - 001485

**WARNING:**  
This plan Protected under Copyright Laws. Original mylar drawing on file at the Architects' office can be reproduced with the Architects' permission only. If someone wishes to copy this plan, contact John Hanna (312) 750-1800

ISSUED FOR REVIEW  
ISSUED FOR REVIEW  
ISSUED FOR PERMIT FEBRUARY 8, 2017  
ISSUED FOR BID



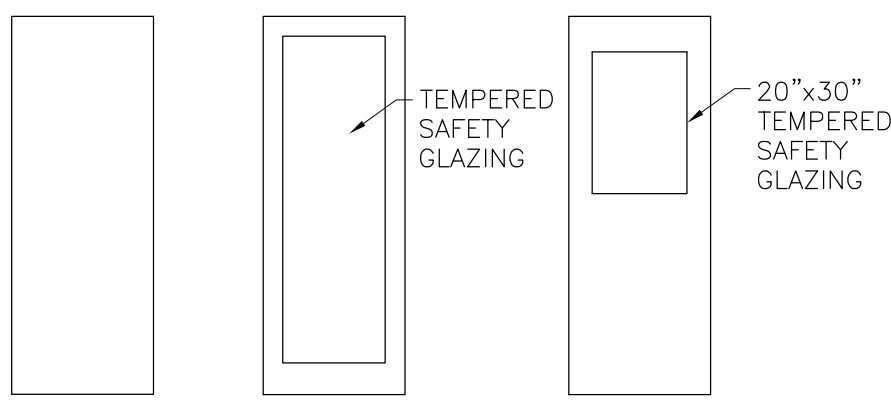
**PROJECT NAME & ADDRESS**  
2424 W. LYNDALE ST  
4 UNIT 3 STORY  
MAS.BLDG. W/BSMT  
CHICAGO, ILLINOIS

**SHEET TITLE**  
BASEMENT  
AND FIRST  
FLOOR PLANS

**FILENAME**

**SHEET NUMBER**  
A-2

DOOR TAG	DOOR TYPE	WIDTH+HT+THICK	DOOR MATERIAL	FRAME MATERIAL	HDWR SET NO.	REMARKS
1	B	3'-0"x8'-0"x1 1/2"	ALUM	ALUM	2	EXTERIOR ENTRY DOOR
2	A	3'-0"x7'-0"x1 1/2"	HM	HM	2	EXTERIOR DOOR NO LITE
3	C	3'-0"x7'-0"x1 1/2"	HM	HM	2	EXTERIOR DOOR W/LITE
4	A	3'-0"x7'-0"x1 1/2"	SC.WD.	SC.WD.	4	BMT REAR APART.DOR
5	A	3'-0"x7'-0"x1 1/2"	SC.WD.	SC.WD.	3	'C' LABEL .75 HOUR RATED
6	A	2'-8"x6'-8"x1 1/2"	SC.WD.	SC.WD.	2	BEDROOM
7	A	2'-6"x6'-8"x1 1/2"	SC.WD.	SC.WD.	4	BATH/CLOSET
8	A	(2)2'-6"x6'-8"x1 1/2"	SC.WD.	SC.WD.	4	CLOSET
9	A	(2)2'-6"x6'-8"x1 1/2"	SC.WD.	SC.WD.	4	LAUNDRY W/LOUVER
10	A	(2)2'-0"x6'-8"x1 1/2"	SC.WD.	SC.WD.	4	CLOSET
11	A	3'-0"x6'-8"x1 1/2"	SC.WD.	SC.WD.	4	LAUNDRY LOUVERED



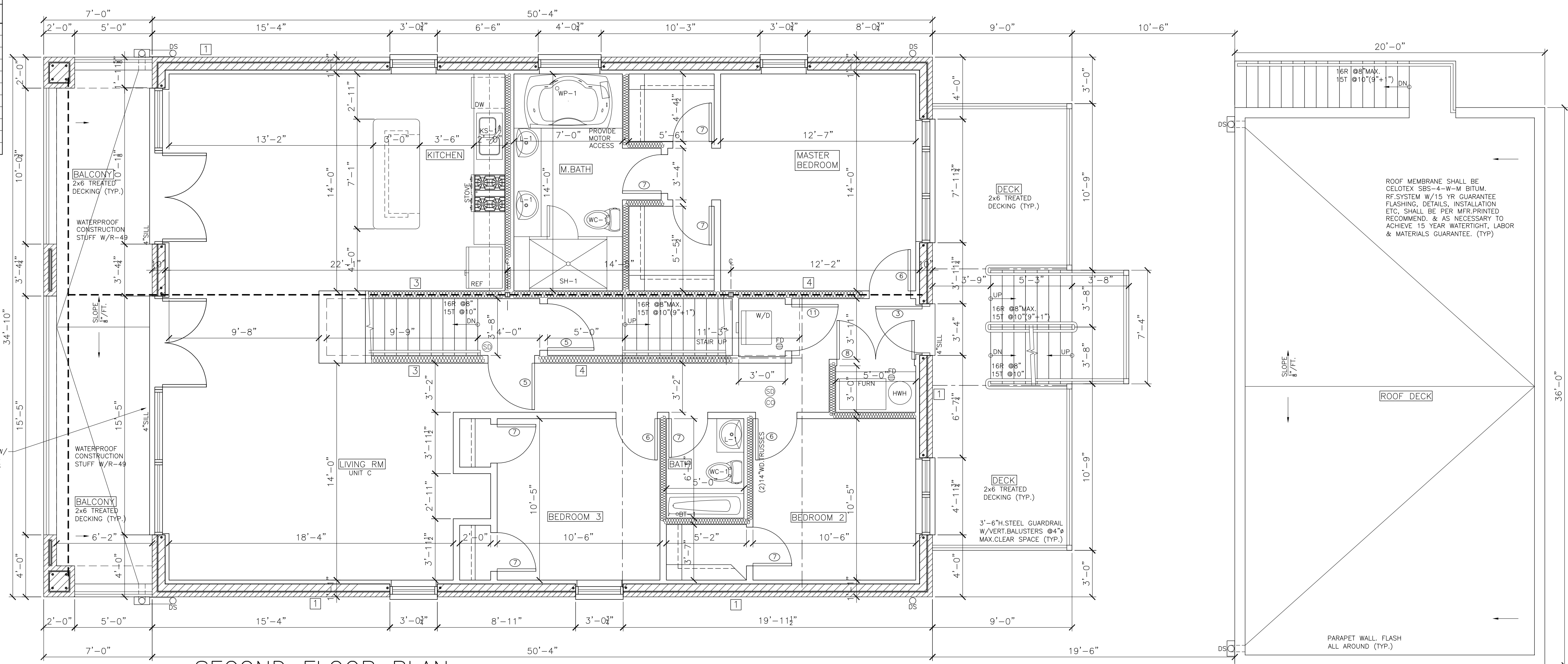
TYPE A TYPE B TYPE C

NUMBER	HARDWARE SET
1	LCN SURFACE MOUNTED CLOSER, 2 PAIR BUTTS FEB 179 42x42 PUSH/PULL MEN OR WOMEN SYMBOL FOR UNIVERSAL HANDICAPPED ACCESSIBILITY, STAINLESS STEEL KICKPLATE EACH FACE, WALL STOP
2	2 PAIR 42x42 BUTTS, LOCKSET/DUMMY KNOB & B FLUSH BOLT, (2) WALL STOP O.H. CLOSER & S.S. KICK PLATE EA.FACE
3	LCN CLOSER W/O.H. STOP, 2 PAIR BUTTS FEB 179 42x42 LOCKSET, WORTSE SCHLAGE L-07 LEVER, WEATHER STRIP & THRESHOLD
4	2 PAIR BUTTS, STOP.
5	2 PAIR BUTTS, LOCKSET STOP, W/LATCHSET
6	4 PAIR 42x42 BUTTS, COORDINATOR (2) WALL STOPS (2) O.H. CLOSERS
ALL	LOCKSETS THROUGHOUT, LEVERS (UNO)
ALL	FINISH U.S. 26D (UNLESS NOTED OTHERWISE)
ALL	ROD EXIT DRS SHALL BE KEYLESS IN THE DIRECTION OF EGRESS

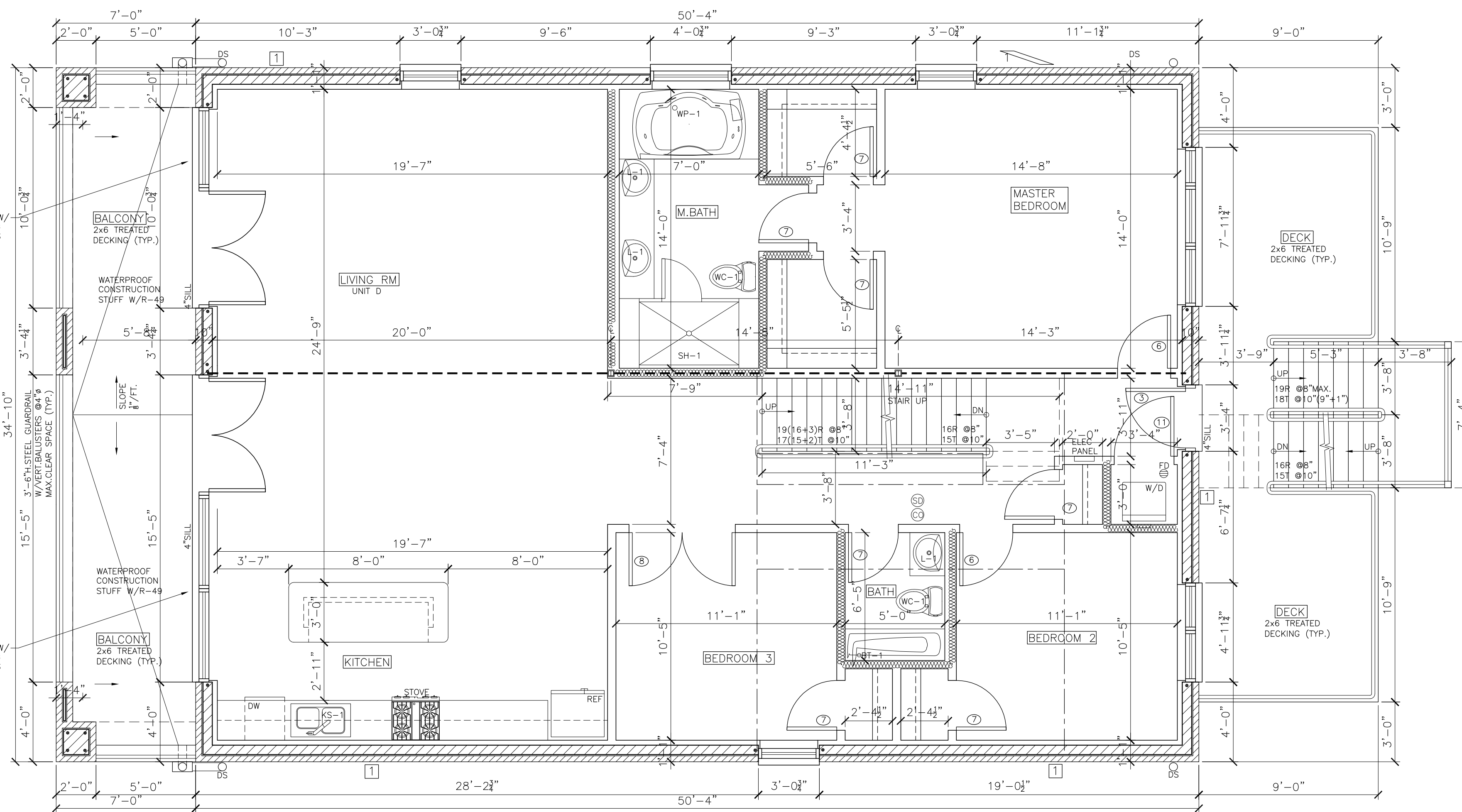
- ALL HARDWARE SHALL COMPLY WITH A.D.A. DOOR OPENING DEVICES SHALL HAVE A SHAPE EASY TO GRASP W/ONE HAND & NOT REQUIRE TIGHT GRASPING, PINCHING, OR TWISTING OF THE WRIST TO OPERATE (LEVER, PUSH/PULL)(IAC 400.310(1)(8)).
- USE BRUSHED CHROME HARDWARE THROUGHOUT U.N.O.
- USE SCHLAGE LOCKSETS/LATCHSETS U.N.O.
- PROVIDE KNURLED HARDWARE ON DOORS TO HAZARDOUS AREAS PER IAC 400.310(1)(2).
- ALL LABELED DOORS SHALL HAVE MATCHING LABELED FRAMES.
- ALL LABEL DOORS TO HAVE CLOSERS.
- 'C' LABEL APARTMENT DOOR MAY HAVE SPRING HINGES & RABBETED JAMB.

WALL & PARTITION SCHEDULE

- FIRE RATED ASSEMBLY SCHEDULE:
- 3 HOUR U.L. U902 BEARING MASONRY WALL  
6"x8"x16" CMU W/4" FACE BRICK CLASS D-2
  - 3 HOUR U.L. U904 BEARING MASONRY WALL  
8"x8"x16" CONCRETE BLOCK CLASS C-3
  - 2 HOUR U.L. U301 NON-LOAD BEARING STUD WALL  
2x4's @16"O.C. W/(2)LAYERS 5/8" GYP.BD. EA.FACE
  - 1 HOUR U.L. U305 NON-LOAD BEARING STUD WALL  
2x4's @16"O.C. W/(1)LAYER 5/8" GYP.BD. EA.FACE
  - 1 HOUR U.L. L521 FLOOR RATED ASSEMBLY  
(SEE WALL SECTION)
  - 2 HOUR U.L. U423 LOAD BEARING STEEL STUD WALL  
3/8" 16 GA. STL.STUDS @16"O.C. W/(2)5/8" GYP.BD. EA.FACE
  - 2 HOUR U.L. U415 CEILING JOIST ASSEMBLY  
22" DEEP J RUNNERS W/3/8" STL.STUDS @16"O.C.  
W/(2)LAYERS 5/8" GYPSUM BOARD EACH FACE
- NOTE: USE TYPE 'C' DRYWALL FOR FIRE RATED ASSEMBLIES



SECOND FLOOR PLAN  
SCALE: 1/4" = 1'-0"



THIRD FLOOR PLAN  
SCALE: 1/4" = 1'-0"

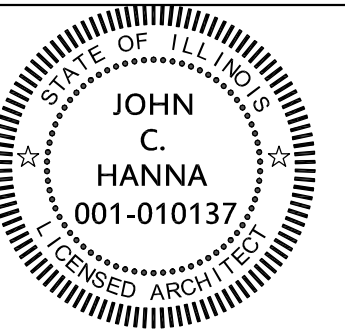


(312) 750-1800  
180 W. WASHINGTON  
CHICAGO, ILLINOIS 60602  
FAX (312) 750-1801

PROFESSIONAL DESIGN FIRM  
ARCHITECT CORPORATION  
LICENSE NUMBER 184 - 001485

WARNING:  
This plan Protected under Copyright  
Laws. Original mylar drawing on file  
at the Architects' office can be  
reproduced with the Architects  
permission only. If someone wishes  
to copy this plan; contact John Hanna  
(312) 750-1800

ISSUED FOR REVIEW  
ISSUED FOR REVIEW  
ISSUED FOR PERMIT FEBRUARY 8, 2017  
ISSUED FOR BID



PROJECT NAME & ADDRESS  
2424 W. LYNDAL ST  
4 UNIT 3 STORY  
MAS.BLDG. W/BSMT  
CHICAGO, ILLINOIS

SHEET TITLE  
SECOND  
AND THIRD  
FLOOR PLANS

FILENAME

SHEET NUMBER  
A-3